

PROTERRA 2018

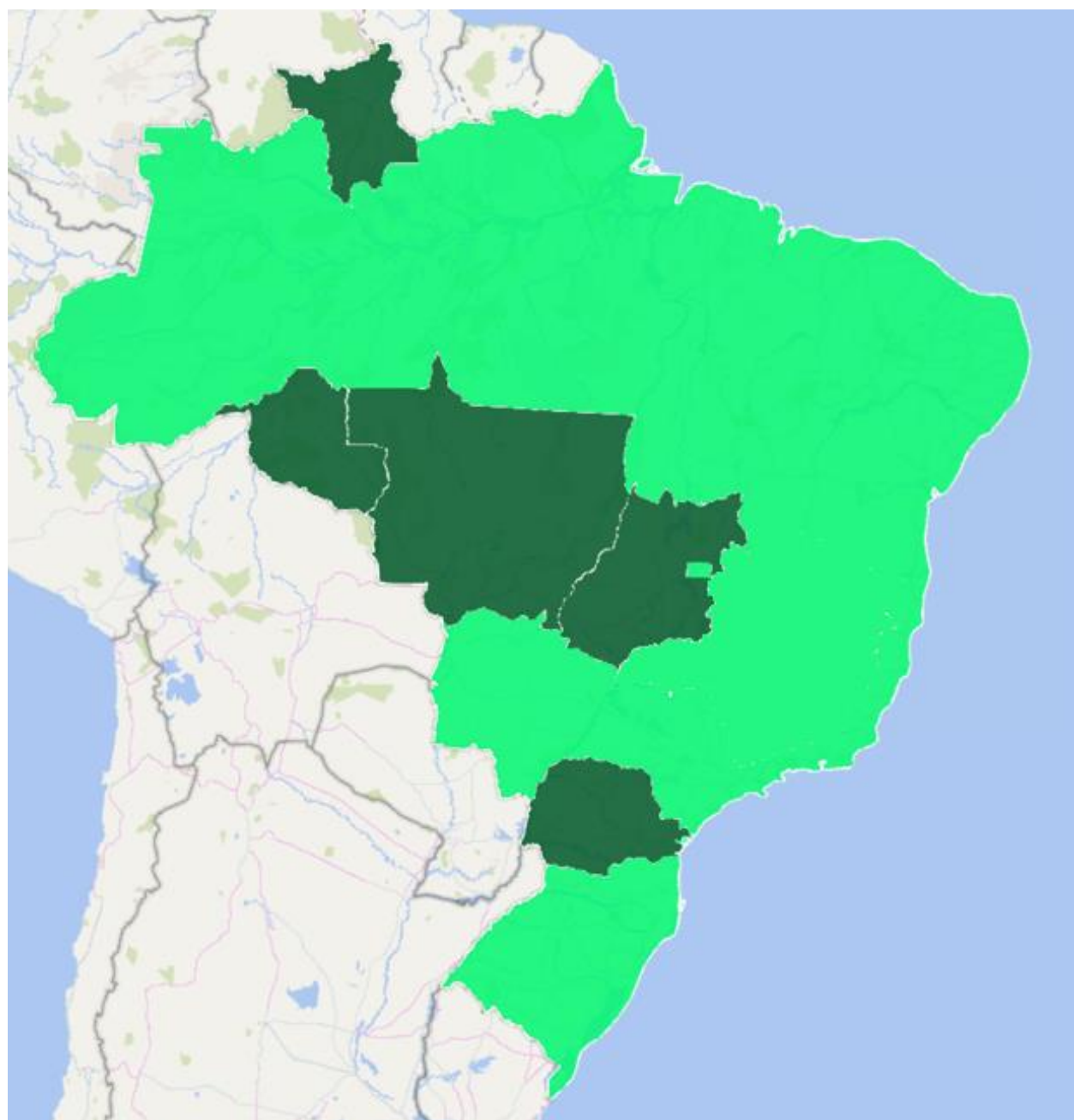
ProTerra Certification Program Results

PROTERRA - SOCIAL RESPONSIBILITY AND ENVIRONMENTAL SUSTAINABILITY



- **The ProTerra Certification Standard was created in 2005 based on the Basel Criteria to promote social responsibility and environmental sustainability of agricultural commodities and its application is widespread in the soy business.**
- **CERT ID has been certifying large volumes of soy and soy derivatives under the ProTerra Standard for the European and domestic market since 2006.**
- **The ProTerra Standard belongs to the ProTerra Foundation established in the Netherlands.**
- **The ProTerra Standard has a cutoff date for no deforestation after 2004. All suppliers included in the certification program must abide by this requirement.**

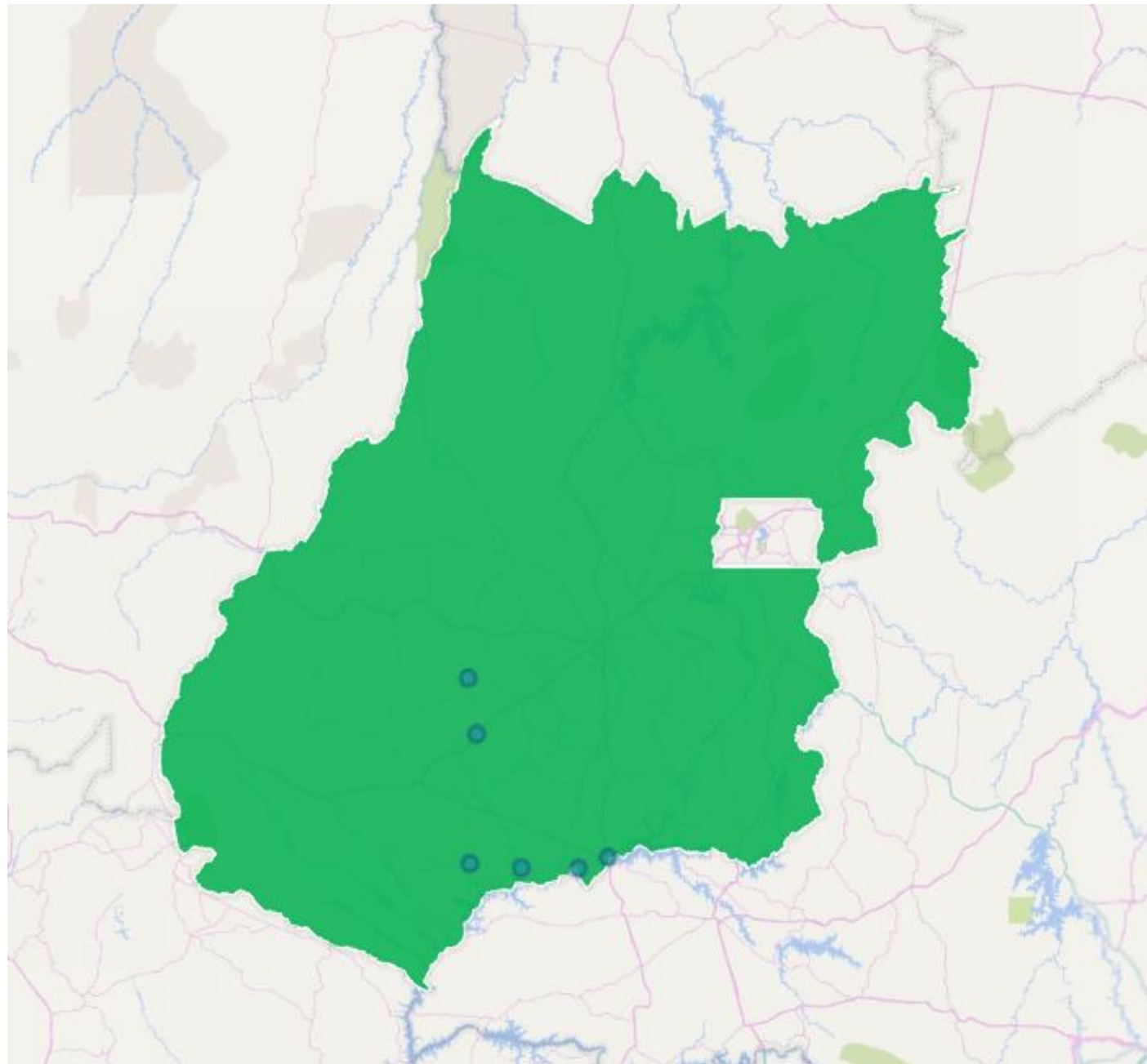
COVERED AREA - STATES



The ProTerra audits cover 50 municipalities in the following state(s):

- **Goiás**
- **Mato Grosso**
- **Paraná**
- **Rondônia**
- **Roraima**

COVERED AREA - MUNICIPALITIES



Municipalities – Goiás

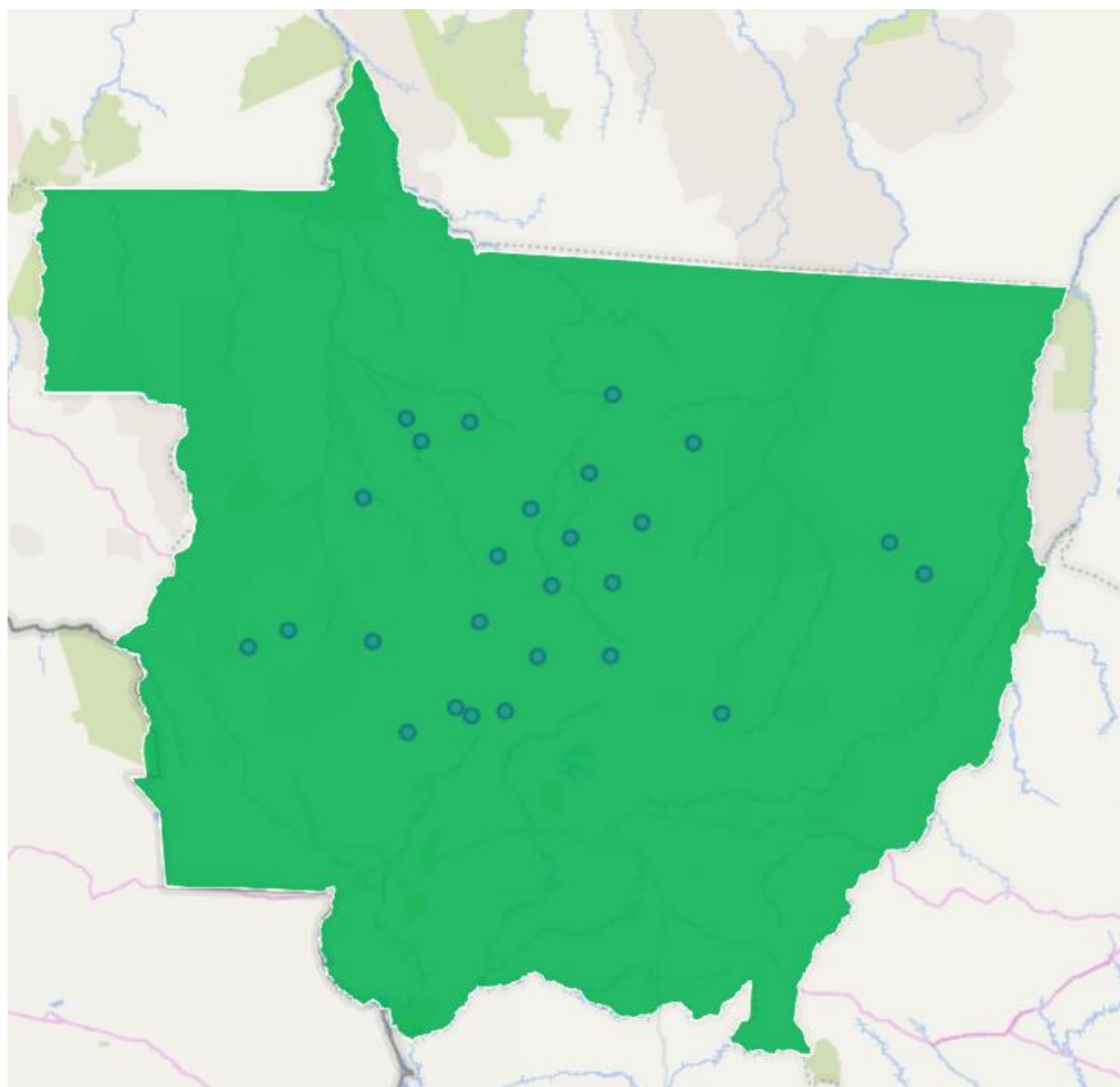
Rio Verde

Montividiu

Santa Helena de Goias

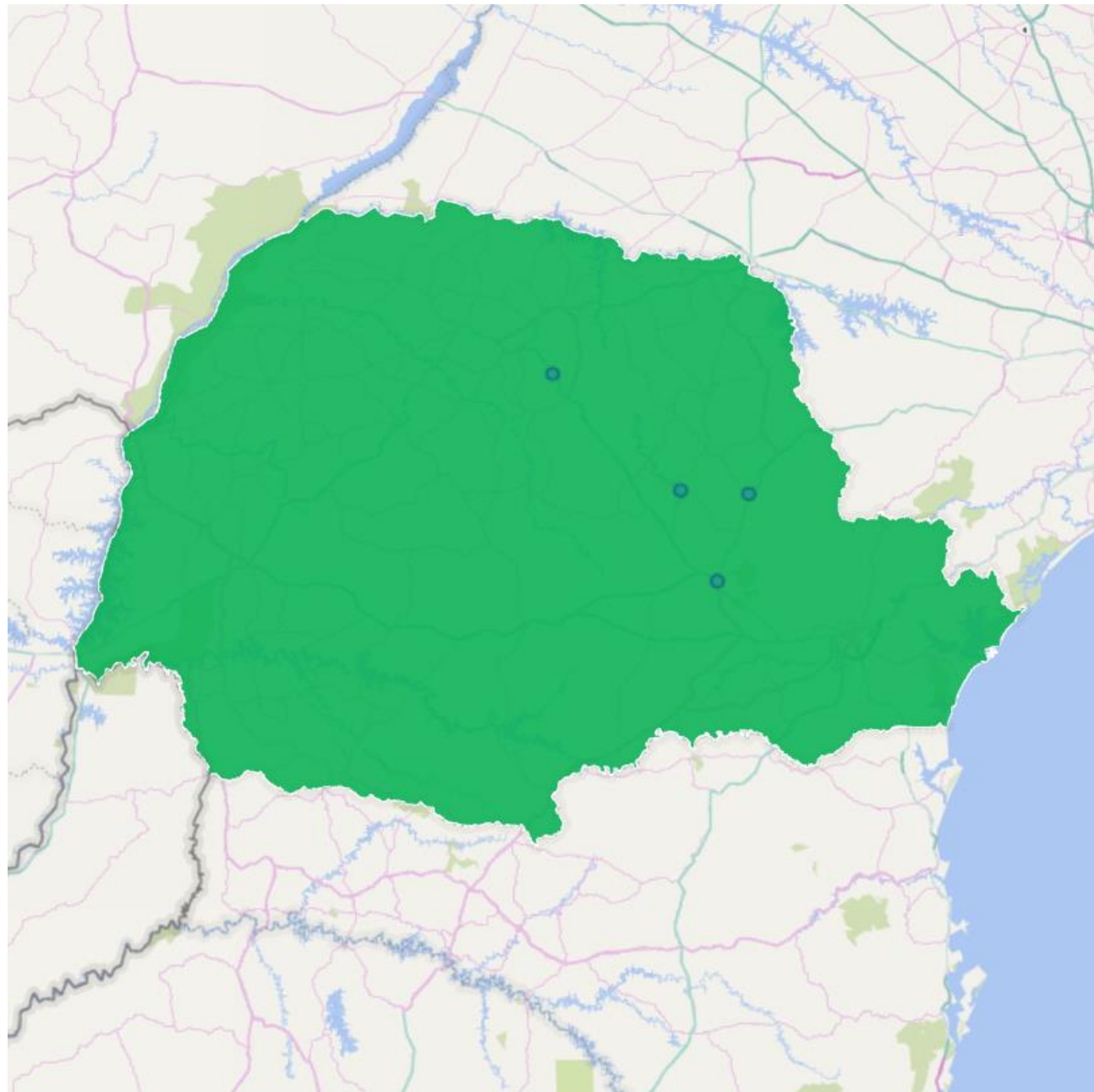
Paraúna

COVERED AREA - MUNICIPALITIES



Municipalities –	Mato Grosso
Campos de Julio	Tabaporã
Arenapolis	Ipiranga do Norte
Tangará da Serra	Porto dos Gaúchos
Nova Maringa	Santa Carmen
Diamantino	Brasnorte
Nova Marilandia	Sapezal
São José do Rio Claro	Vera
Nova Mutum	Sinop
Lucas do Rio Verde	Itauba
Sorriso	União do Sul
Campo Novo do Parecis	Nova Ubiratã
Tapurah	Santa Rita do Trivelato
Feliz Natal	

COVERED AREA - MUNICIPALITIES



Municipalities – Paraná

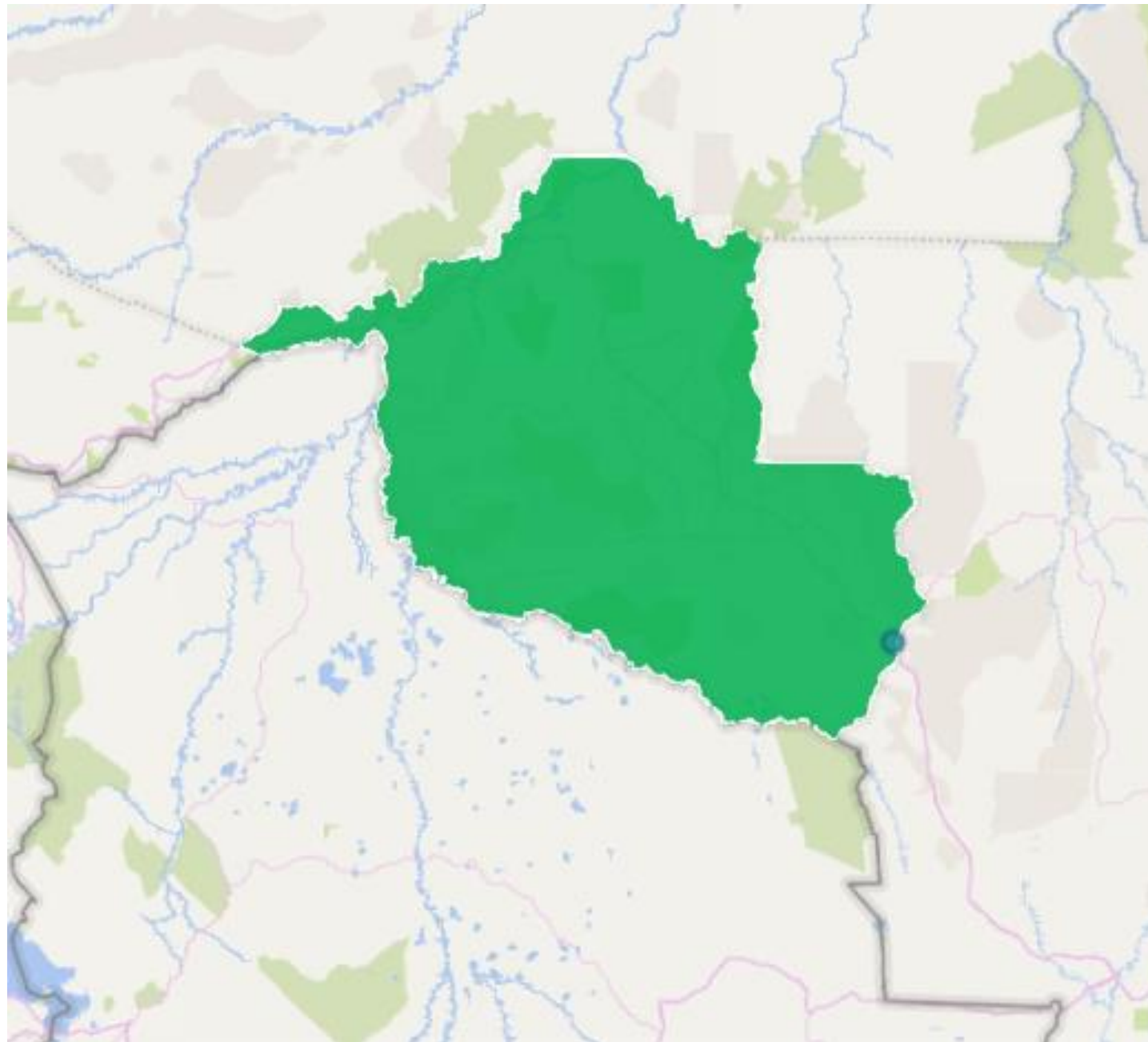
Guarapuava

Pinhão

Reserva do Iguaçu

Cândói

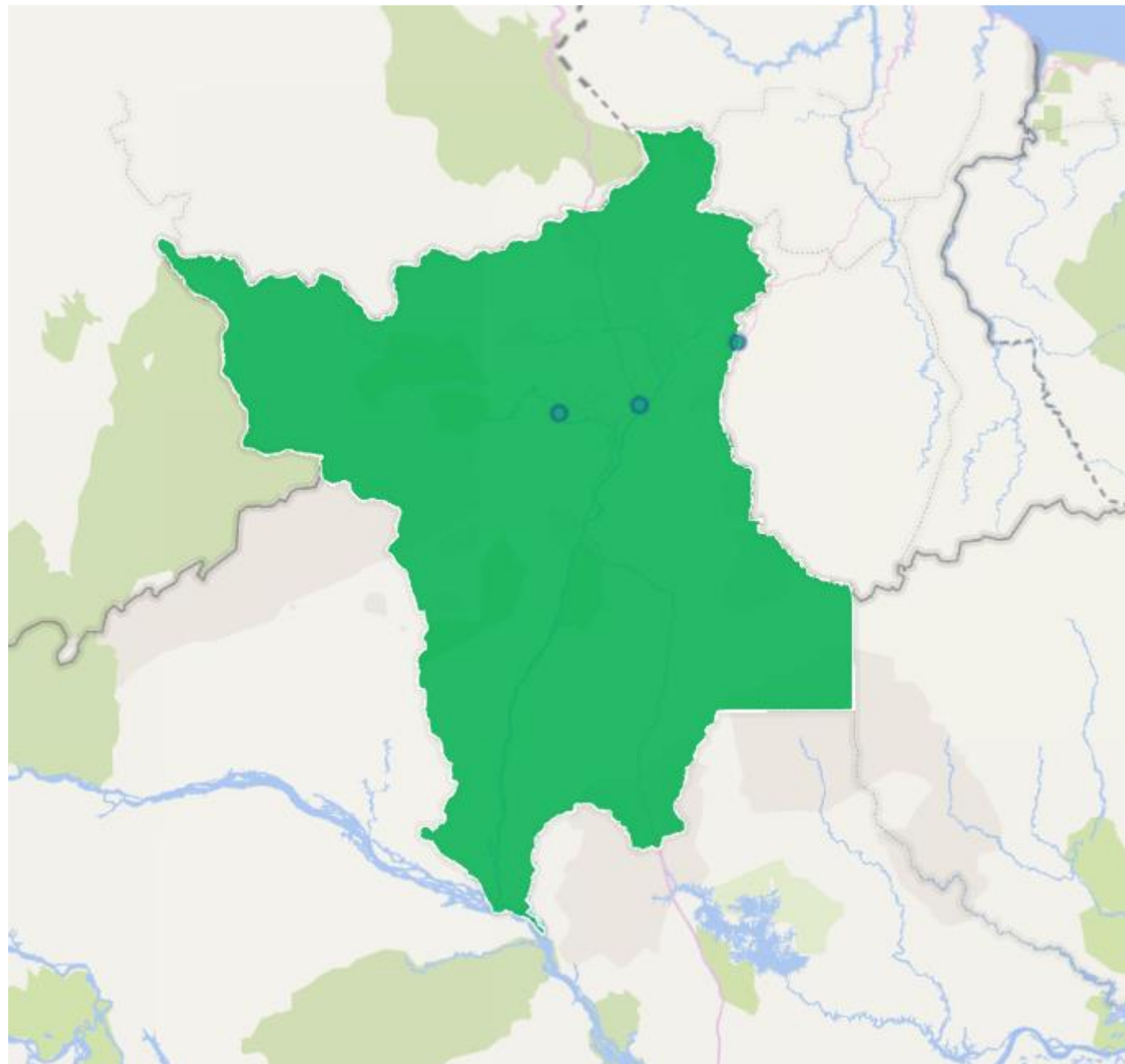
COVERED AREA - MUNICIPALITIES



Municipalities – Rondônia

Vilhena

COVERED AREA - MUNICIPALITIES



Municipalities – Roraima

Alto Alegre

Boa Vista

Bonfim

PROTERRA - SOCIAL RESPONSIBILITY AND ENVIRONMENTAL SUSTAINABILITY



- **Audited suppliers: 305**
- **Compliance index: 95.17%**
- **The individual scores of the indicators of the ProTerra Standard will be displayed in the following slides.**

PRINCIPLE 1 - COMPLIANCE WITH LAW, INTERNATIONAL ACCORDS AND THE PROTERRA STANDARD – SLIDE 1 OF 1: 100% COMPLIANCE

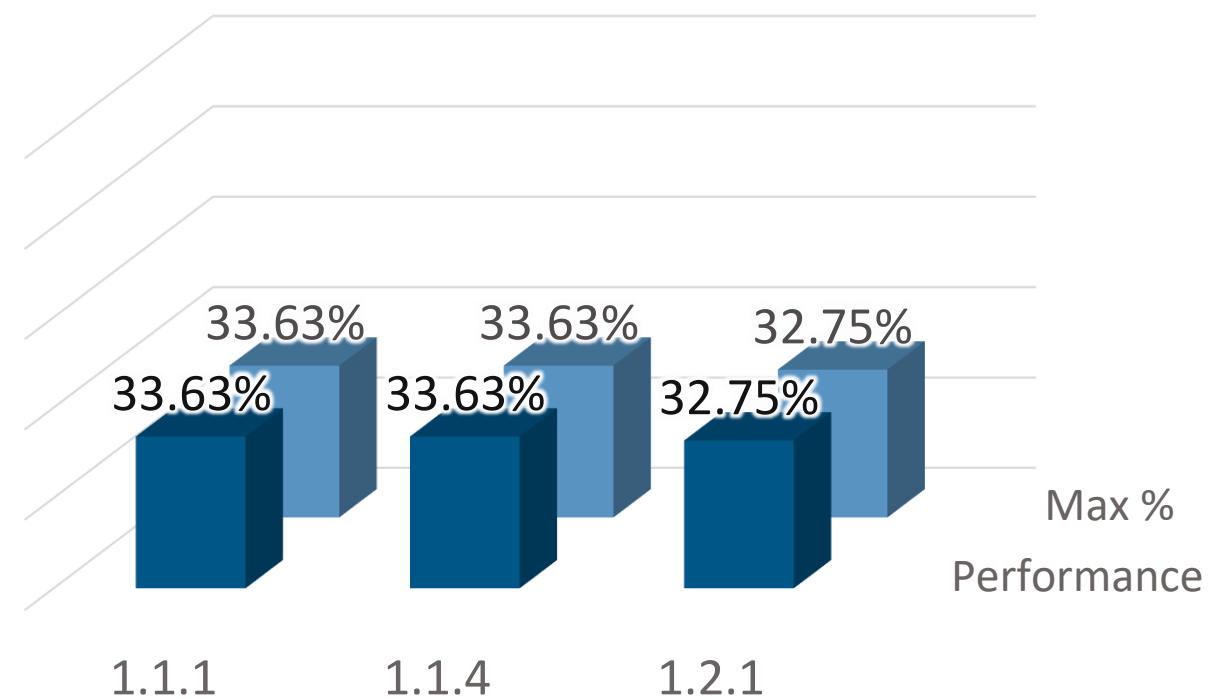


1.1.1 - Compliance with applicable laws.

1.1.4 - The grower has title of the land.

1.2.1 - The farm demonstrates continuous improvement.

PRINCIPLE 1 - Compliance with law, international accords and the ProTerra Standard



PRINCIPLE 2 – HUMAN RIGHTS AND RESPONSIBLE PERSONNEL POLICIES, LABOUR PRACTICES – SLIDE 1 OF 9: 95.62% COMPLIANCE



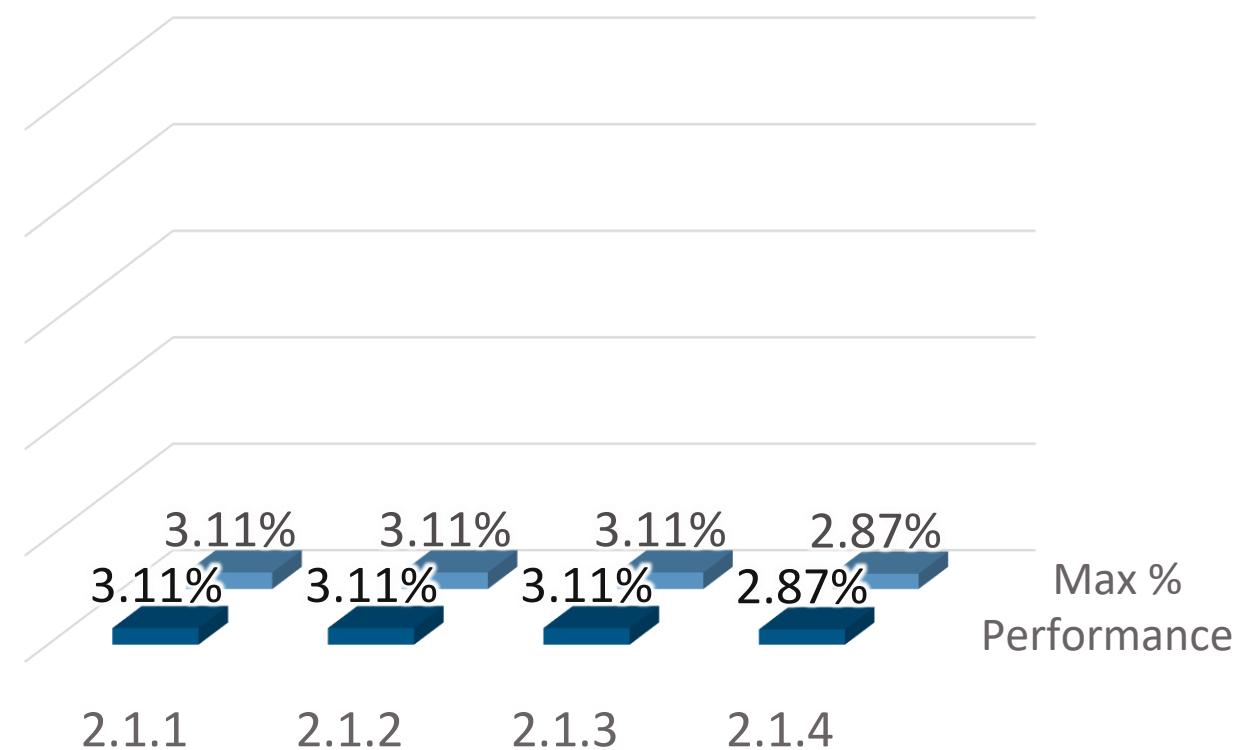
2.1.1 - There is no slave labour or equivalent.

2.1.2 - Workers' identity papers are not retained by the employer.

2.1.3 - Workers' family members are not obligated to work on the farm.

2.1.4 - There is no child labour.

PRINCIPLE 2 – Human Rights and Responsible personnel policies, labour practices



PRINCIPLE 2 – HUMAN RIGHTS AND RESPONSIBLE PERSONNEL POLICIES, LABOUR PRACTICES - SLIDE 2 OF 9: 95.62% COMPLIANCE



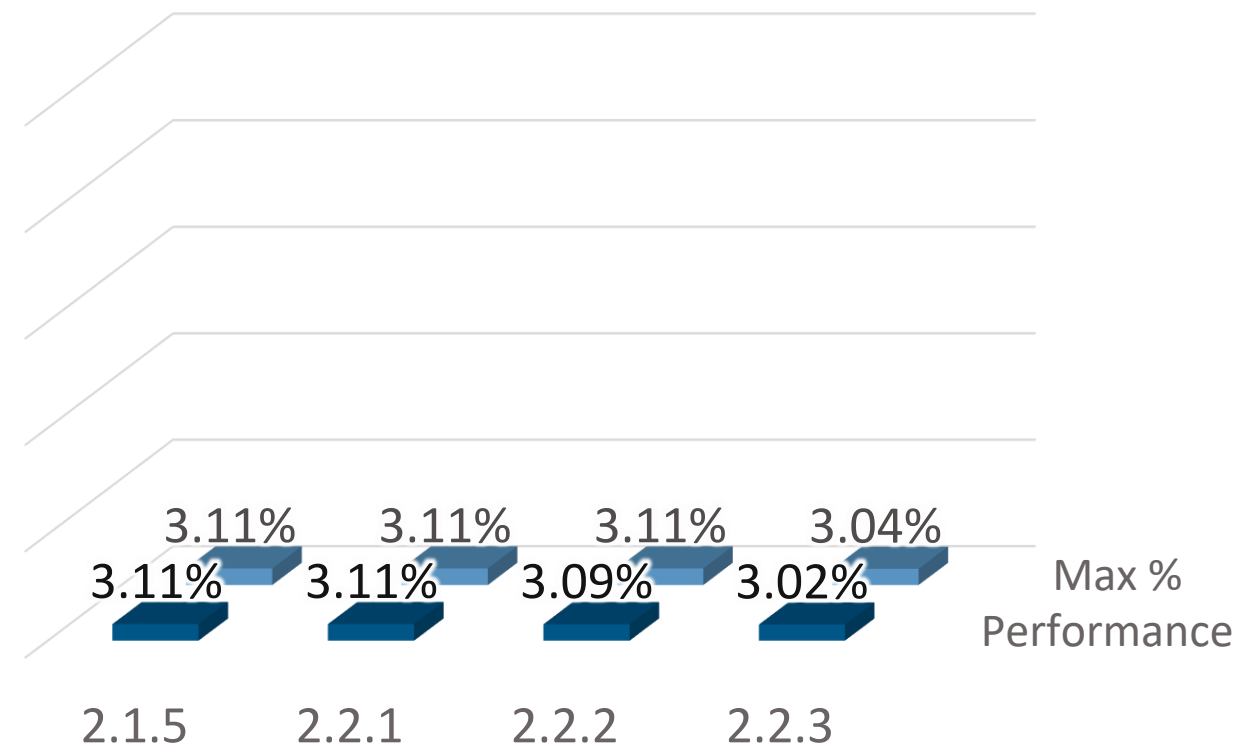
2.1.5 - There are no coercive disciplinary or control methods used.

2.2.1 - The workweek does not exceed 48 hours per week, or respects the national law/collective agreements.

2.2.2 - Overtime does not routinely exceed 12 hours per week.

2.2.3 - Overtime in excess of 12 hours only occurs in limited periods.

PRINCIPLE 2 – Human Rights and Responsible personnel policies, labour practices



PRINCIPLE 2 – HUMAN RIGHTS AND RESPONSIBLE PERSONNEL POLICIES, LABOUR PRACTICES - SLIDE 3 OF 9: 95.62% COMPLIANCE



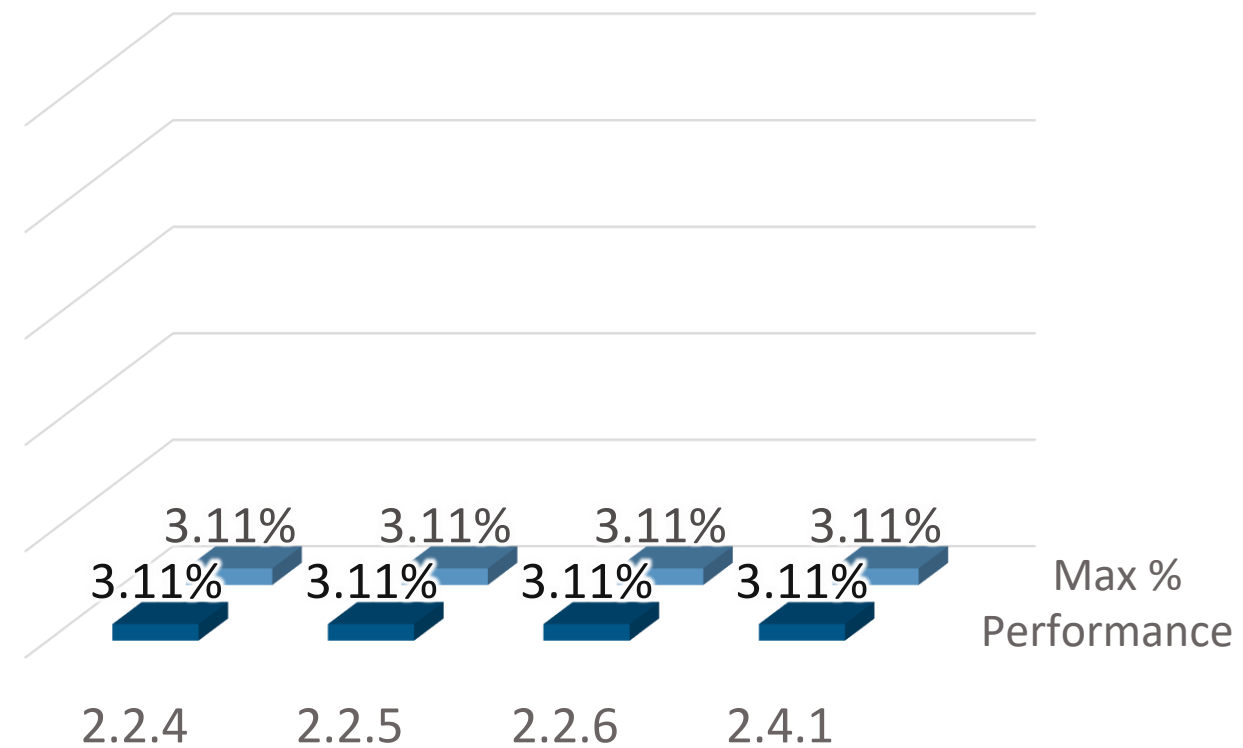
2.2.4 - Overtime hours are compensated as required by law.

2.2.5 - Overtime work is voluntary.

2.2.6 - Workers are entitled to one day off following 6 consecutive days of work.

2.4.1 - Workers have equal opportunities and there is no discrimination.

PRINCIPLE 2 – Human Rights and Responsible personnel policies, labour practices



PRINCIPLE 2 – HUMAN RIGHTS AND RESPONSIBLE PERSONNEL POLICIES, LABOUR PRACTICES - SLIDE 4 OF 9: 95.62% COMPLIANCE



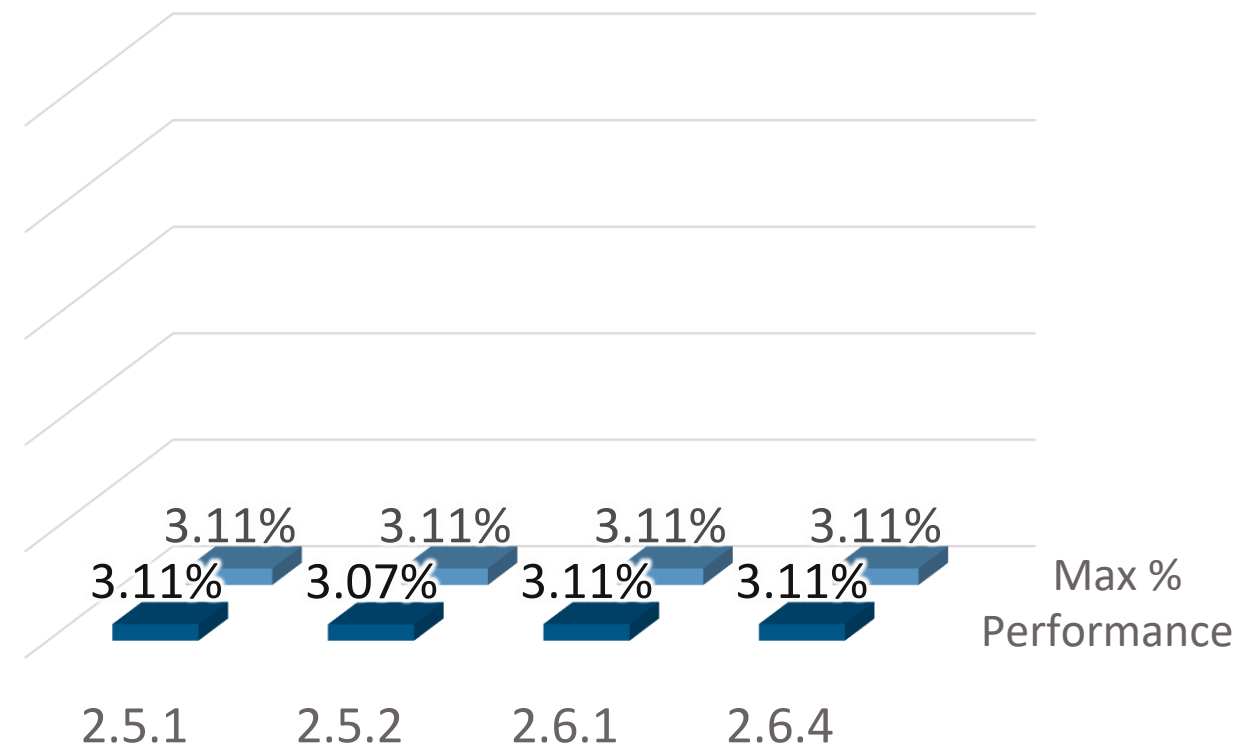
2.5.1 - Working conditions are appropriate and legally compliant.

2.5.2 - Workers living on site shall have appropriate food, water and housing.

2.6.1 - Workers have written employment contracts.

2.6.4 - The farm maintains employee's personnel records for at least 5 years.

PRINCIPLE 2 – Human Rights and Responsible personnel policies, labour practices



PRINCIPLE 2 – HUMAN RIGHTS AND RESPONSIBLE PERSONNEL POLICIES, LABOUR PRACTICES - SLIDE 5 OF 9: 95.62% COMPLIANCE



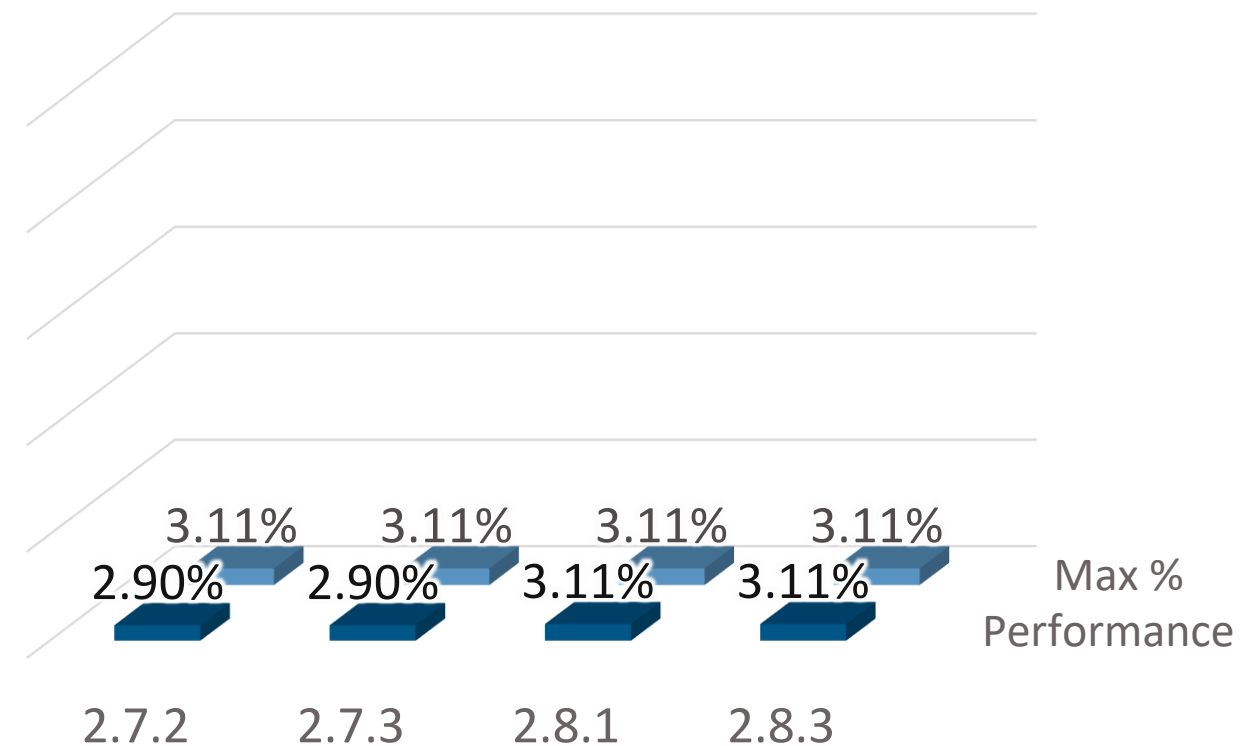
2.7.2 - Workers' job-related training.

2.7.3 - Training records are maintained for 5 years.

2.8.1 - Workers' wages meet or exceed the national minimum wage or collective agreement.

2.8.3 - Wages are regularly paid, documented and recorded.

PRINCIPLE 2 – Human Rights and Responsible personnel policies, labour practices



PRINCIPLE 2 – HUMAN RIGHTS AND RESPONSIBLE PERSONNEL POLICIES, LABOUR PRACTICES - SLIDE 6 OF 9: 95.62% COMPLIANCE



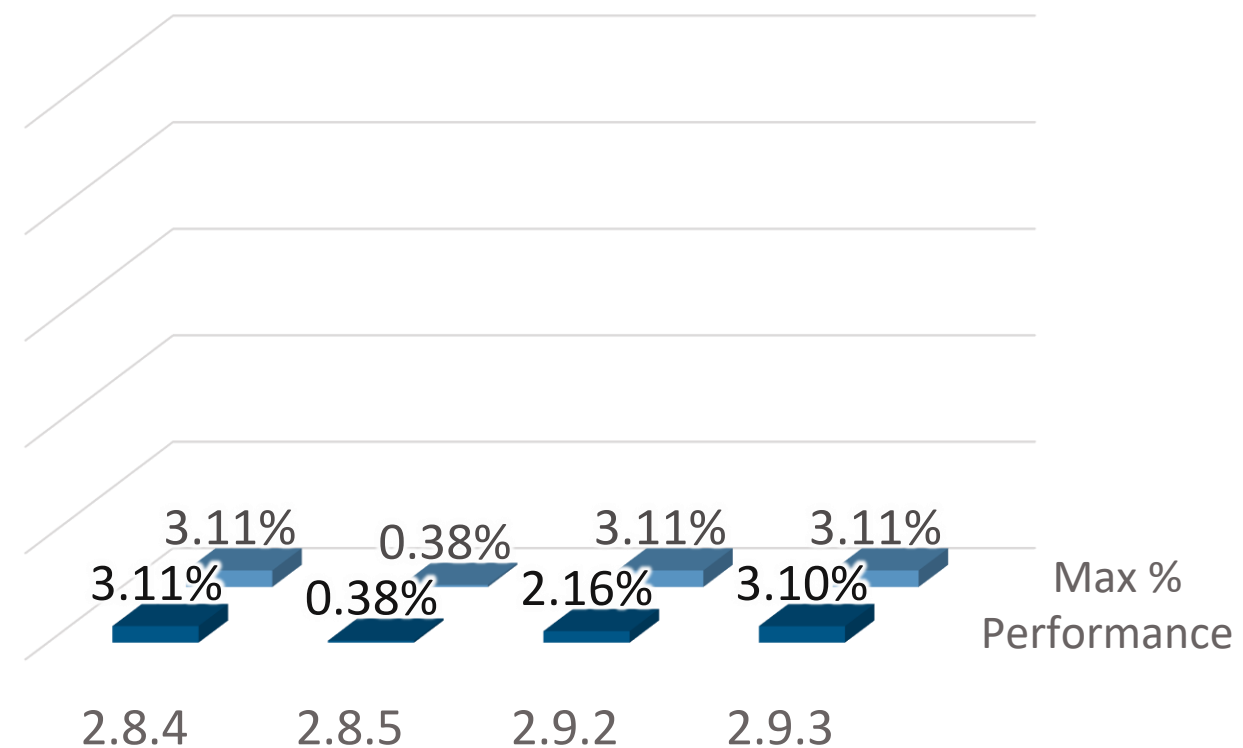
2.8.4 - There is no deductions from wages for disciplinary purposes.

2.8.5 - The farm establishes a social security plan, where it is not required by law.

2.9.2 - Operation's risk assessment to mitigate activities' inherent risks.

2.9.3 - First aid kits/emergency services are quickly available in case of accidents.

PRINCIPLE 2 – Human Rights and Responsible personnel policies, labour practices



PRINCIPLE 2 – HUMAN RIGHTS AND RESPONSIBLE PERSONNEL POLICIES, LABOUR PRACTICES - SLIDE 7 OF 9: 95.62% COMPLIANCE



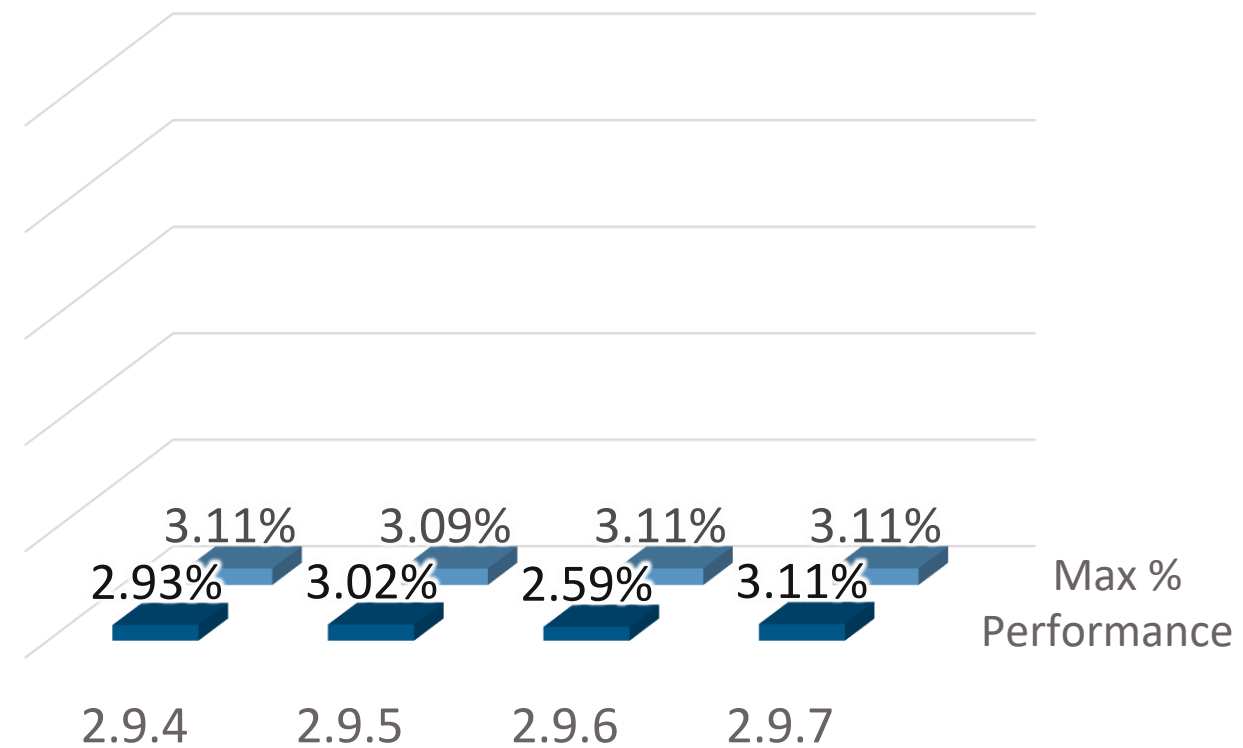
2.9.4 - Workers' health and safety program is implemented and monitored.

2.9.5 - Hazardous tasks are conducted by qualified and properly trained workers.

2.9.6 - Required PPE is provided.

2.9.7 - PPE is used to perform dangerous tasks.

PRINCIPLE 2 – Human Rights and Responsible personnel policies, labour practices



PRINCIPLE 2 – HUMAN RIGHTS AND RESPONSIBLE PERSONNEL POLICIES, LABOUR PRACTICES - SLIDE 8 OF 9: 95.62% COMPLIANCE



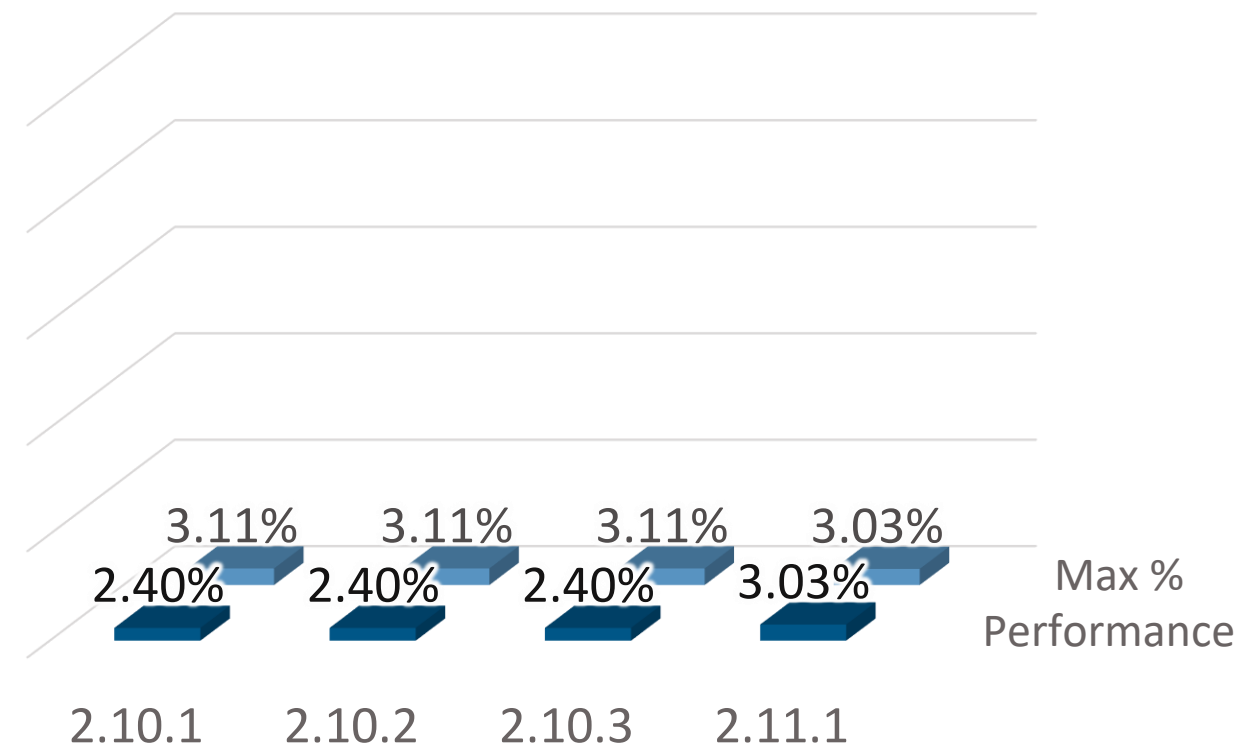
2.10.1 - Workers are trained on health and safety.

2.10.2 - Health and safety training records are maintained for 5 years.

2.10.3 - Health and safety training is provided by qualified personnel.

2.11.1 - Maternity leave is respected according to the law.

PRINCIPLE 2 – Human Rights and Responsible personnel policies, labour practices



PRINCIPLE 2 – HUMAN RIGHTS AND RESPONSIBLE PERSONNEL POLICIES, LABOUR PRACTICES - SLIDE 9 OF 9: 95.62% COMPLIANCE

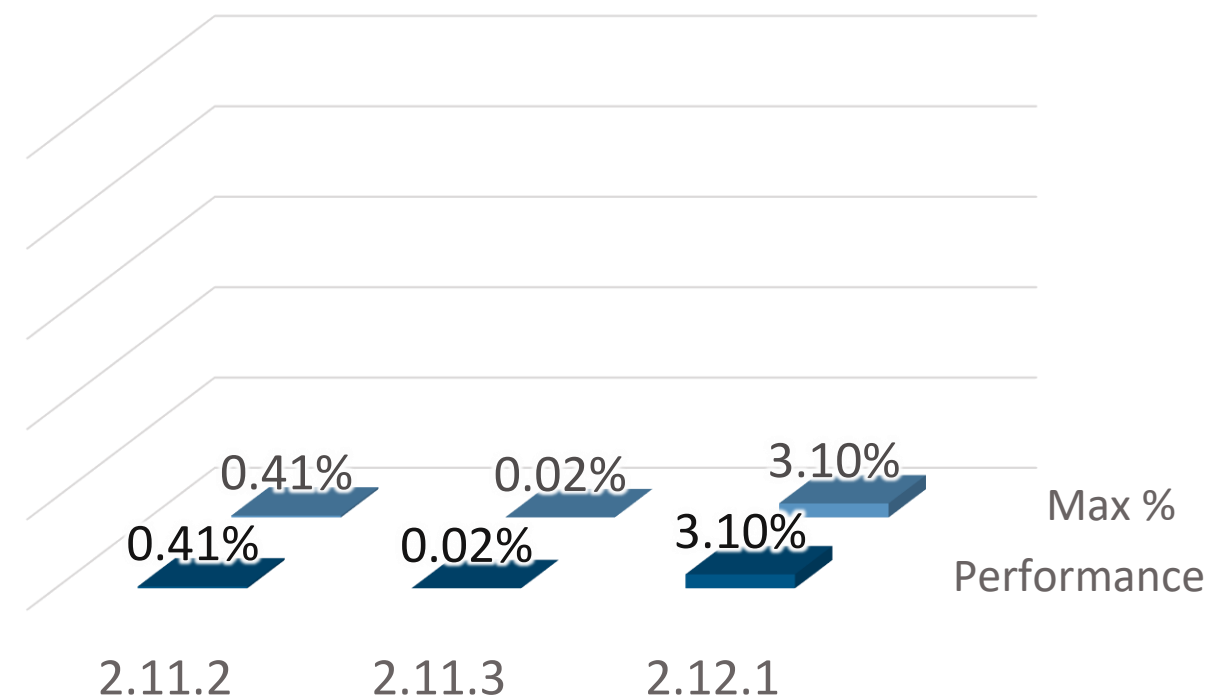


2.11.2 - Workers return from maternity leave under the same working conditions.

2.11.3 – If it is not foreseen in the legislation, the farm establishes a reasonable maternity leave.

2.12.1 - Workers are allowed to join trade unions.

PRINCIPLE 2 – Human Rights and Responsible personnel policies, labour practices



PRINCIPLE 3 - RESPONSIBLE RELATIONS WITH WORKERS AND COMMUNITY - SLIDE 1 OF 2: 99.93% COMPLIANCE

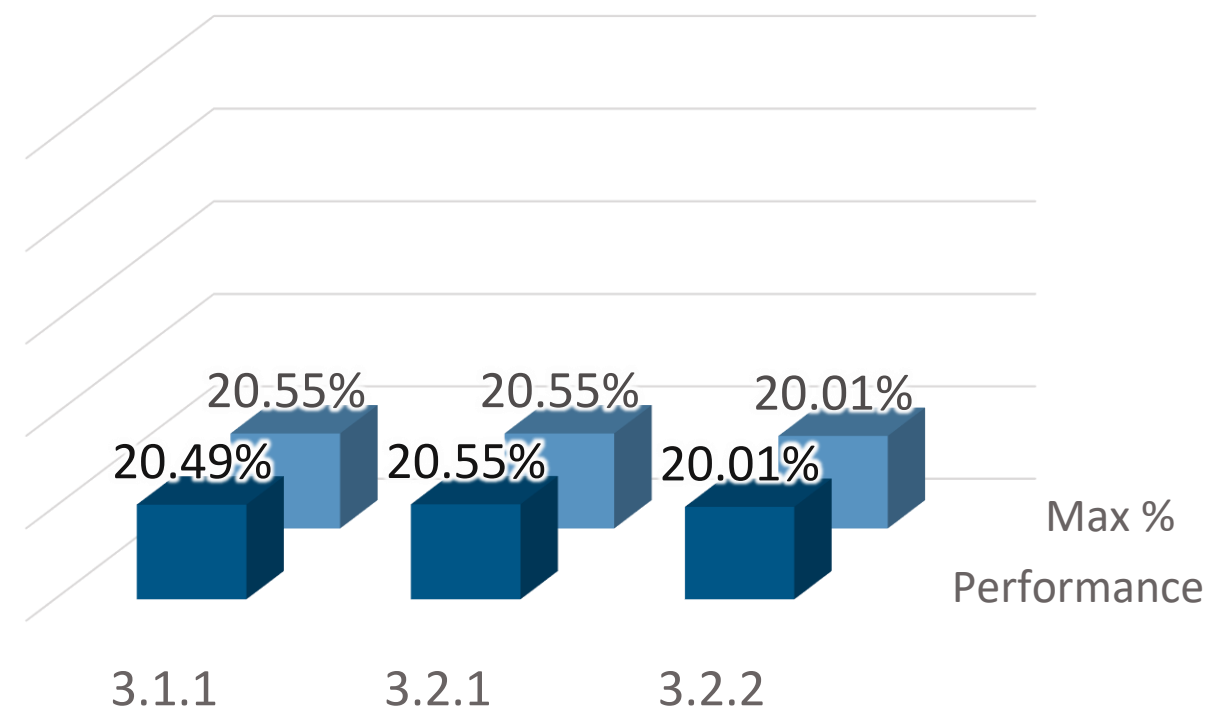


3.1.1 - The farm has a complaint system implemented for employees and local community.

3.2.1 - Land use does not interfere with neighbours' production systems.

3.2.2 - There is no land rights disputes.

PRINCIPLE 3 - Responsible relations with workers and community



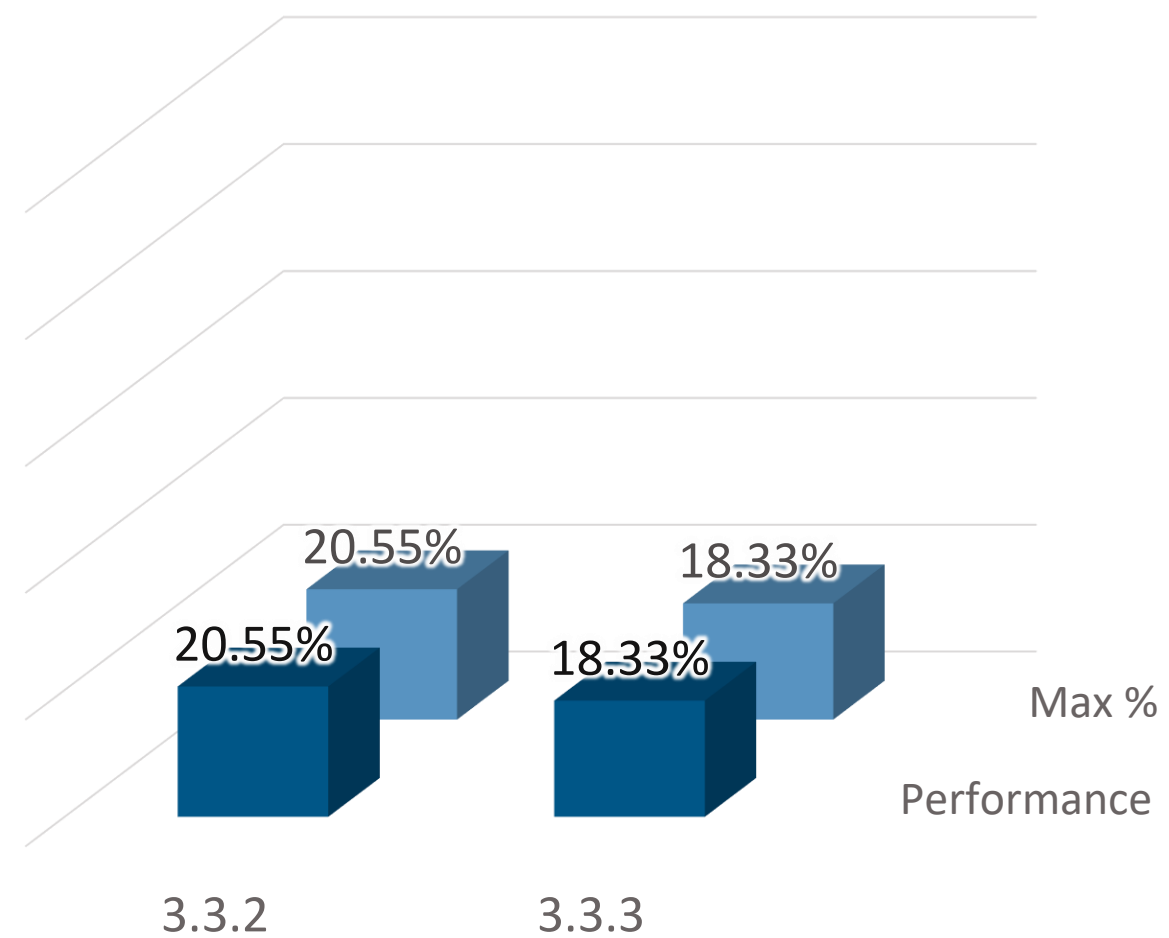
PRINCIPLE 3 - RESPONSIBLE RELATIONS WITH WORKERS AND COMMUNITY - SLIDE 2 OF 2: 99.93% COMPLIANCE



3.3.2 - The farm contributes to the local economy.

3.3.3 - Job opportunities are made available to members of the local community.

PRINCIPLE 3 - Responsible relations with workers and community



PRINCIPLE 4 - ENVIRONMENTAL SERVICES, EFFECTIVE ENVIRONMENTAL MANAGEMENT PLAN - SLIDE 1 OF 2: 98.35% COMPLIANCE

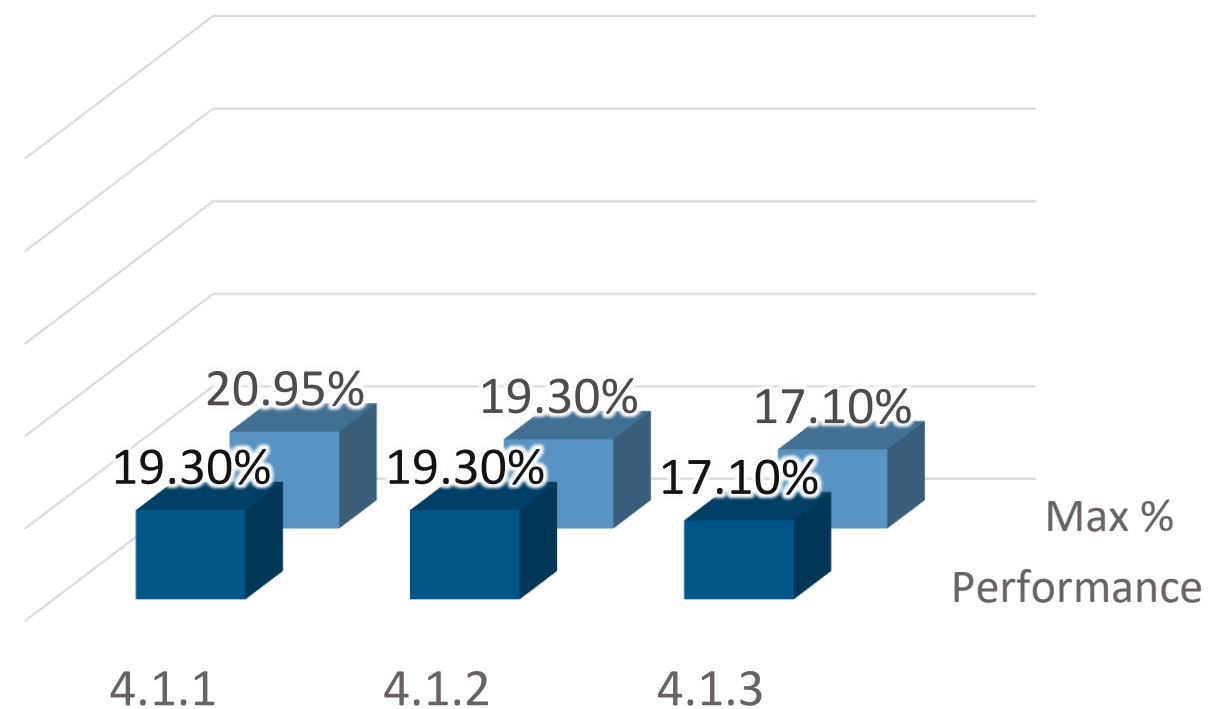


4.1.1 - Native vegetation areas and other HCVAs have not been cleared after 2004.

4.1.2 - The farm joined the Rural Environmental Registry (CAR) and complies with the Brazilian Forest Code.

4.1.3 - Compensatory measures have been taken to recover native vegetation areas cleared between 1994 and 2004.

PRINCIPLE 4 - Environmental services, effective environmental management plan



PRINCIPLE 4 - ENVIRONMENTAL SERVICES, EFFECTIVE ENVIRONMENTAL MANAGEMENT PLAN - SLIDE 2 OF 2: 98.35% COMPLIANCE

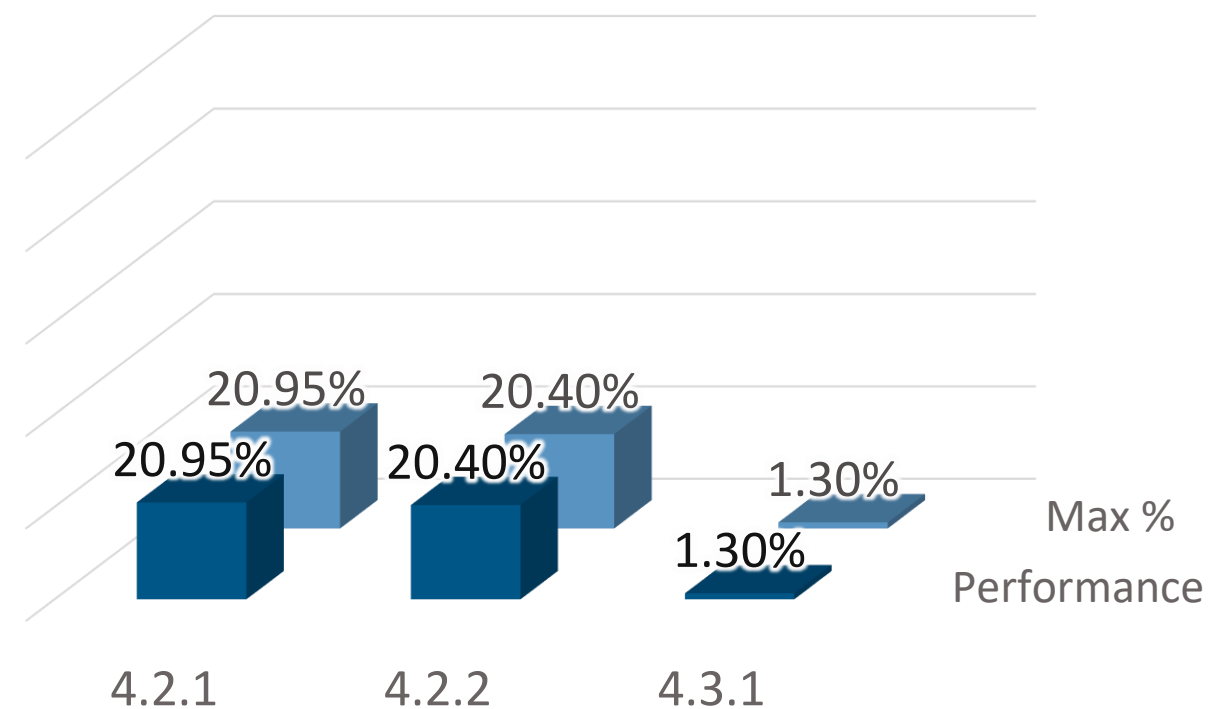


4.2.1 - Natural vegetation around bodies of water, on steep slopes and hill tops is maintained or being restored.

4.2.2 - There is neither hunting nor gathering of native species.

4.3.1 - The farm has performed an Environmental and Social Impact Assessment (ESIA) for new large or high risk greenfield expansion or projects and infrastructure.

PRINCIPLE 4 - Environmental services, effective environmental management plan



PRINCIPLE 5 - GENETICALLY MODIFIED ORGANISMS (GMO) NOT USED - SLIDE 1 OF 1: 100% COMPLIANCE

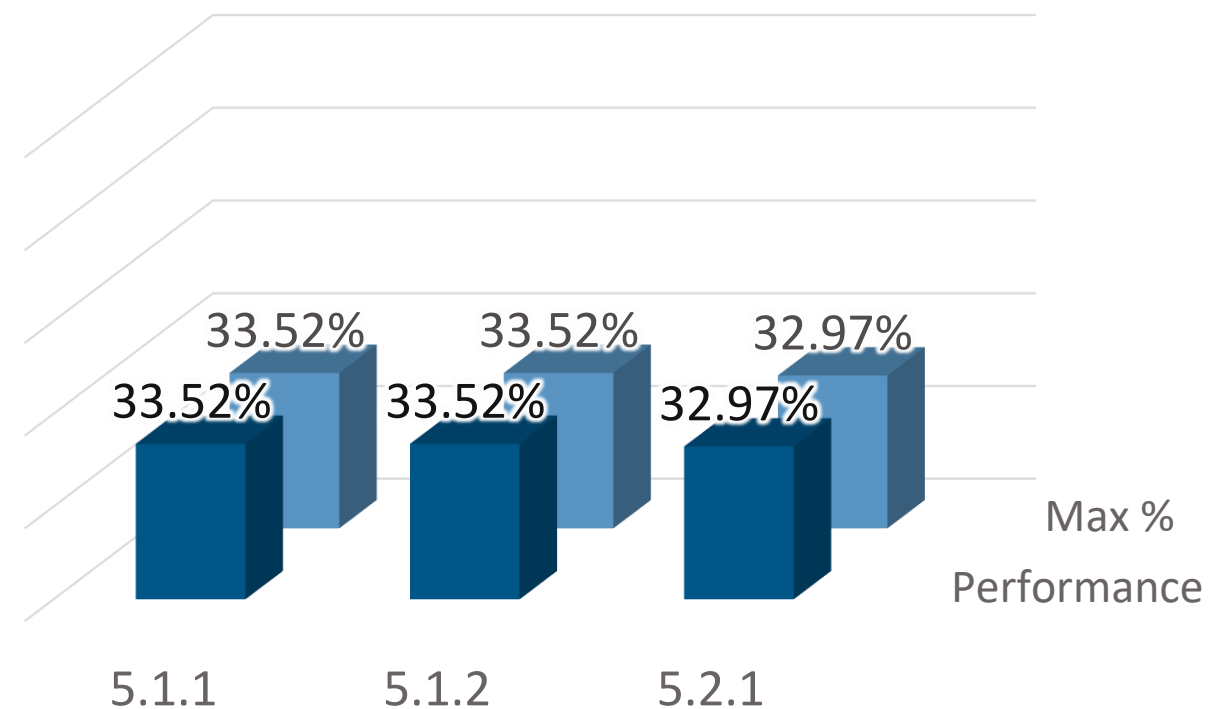


5.1.1 - GMO products are not used in the production of ProTerra products.

5.1.2 - The production system ensures that there is no contamination by GMO's and, if there is adventitious contamination, the limit does not exceed 0.1%.

5.2.1 - Non-GMO and GMO materials are segregated.

PRINCIPLE 5 - Genetically Modified Organisms (GMO) not used



PRINCIPLE 6 - POLLUTION AND WASTE MANAGED EFFECTIVELY - SLIDE 1 OF 2: 83.20% COMPLIANCE

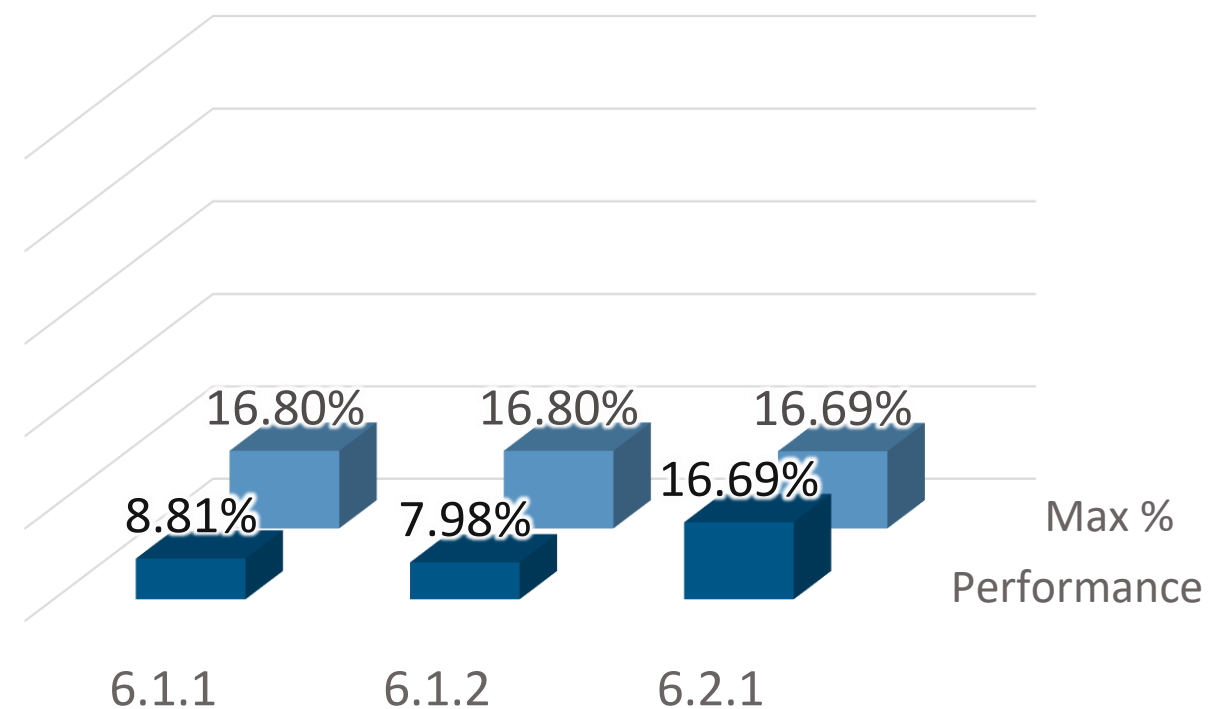


6.1.1 - Hazardous wastes are properly handled and have correct destination.

6.1.2 - Non-biological wastes have correct destination and, where possible, are recycled.

6.2.1 - Biological wastes are properly handled and have correct destination.

PRINCIPLE 6 - Pollution and waste managed effectively



PRINCIPLE 6 - POLLUTION AND WASTE MANAGED EFFECTIVELY - SLIDE 2 OF 2: 83.20% COMPLIANCE

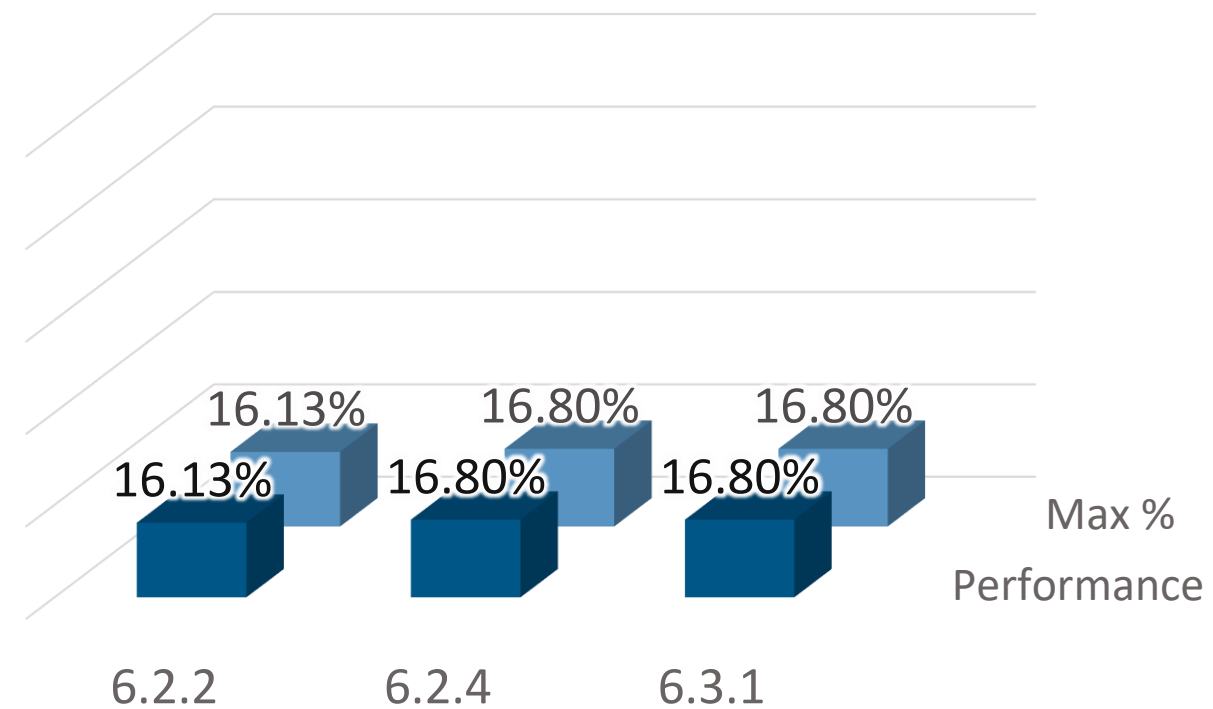


6.2.2 - Biological wastes are not incinerated.

6.2.4 - Sewage water / effluents have adequate destination.

6.3.1 - Water, soil, pests, fertilization and irrigation are managed in a manner that surface and groundwater are not contaminated.

PRINCIPLE 6 - Pollution and waste managed effectively



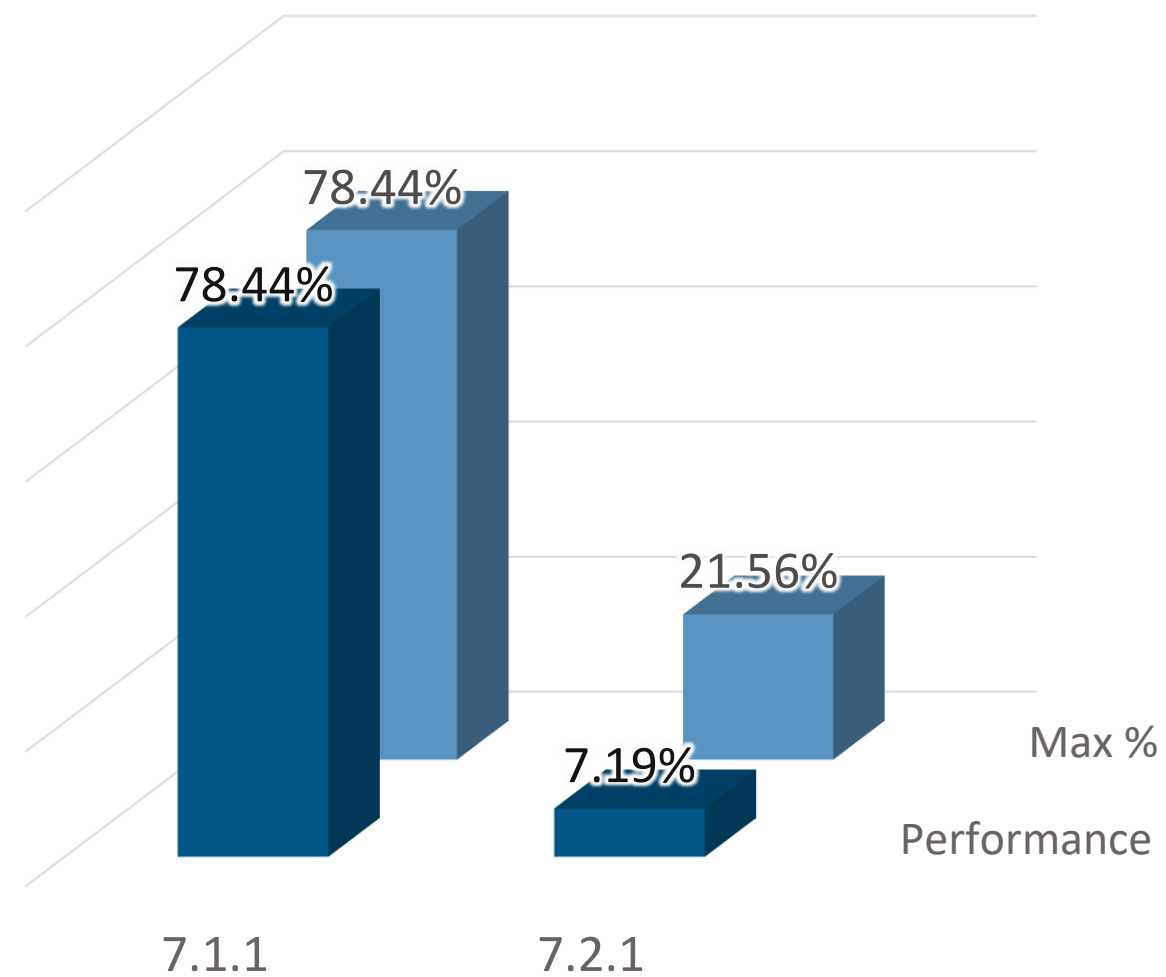
PRINCIPLE 7 - WATER MANAGED CONSERVATIVELY - SLIDE 1 OF 1: 100% COMPLIANCE



7.1.1 - The quantity and quality of natural water resources are conserved.

7.2.1 - Best practices are implemented for water management and for irrigation.

PRINCIPLE 7 - Water managed conservatively



PRINCIPLE 8 - GREENHOUSE GASES AND ENERGY MANAGED EFFECTIVELY

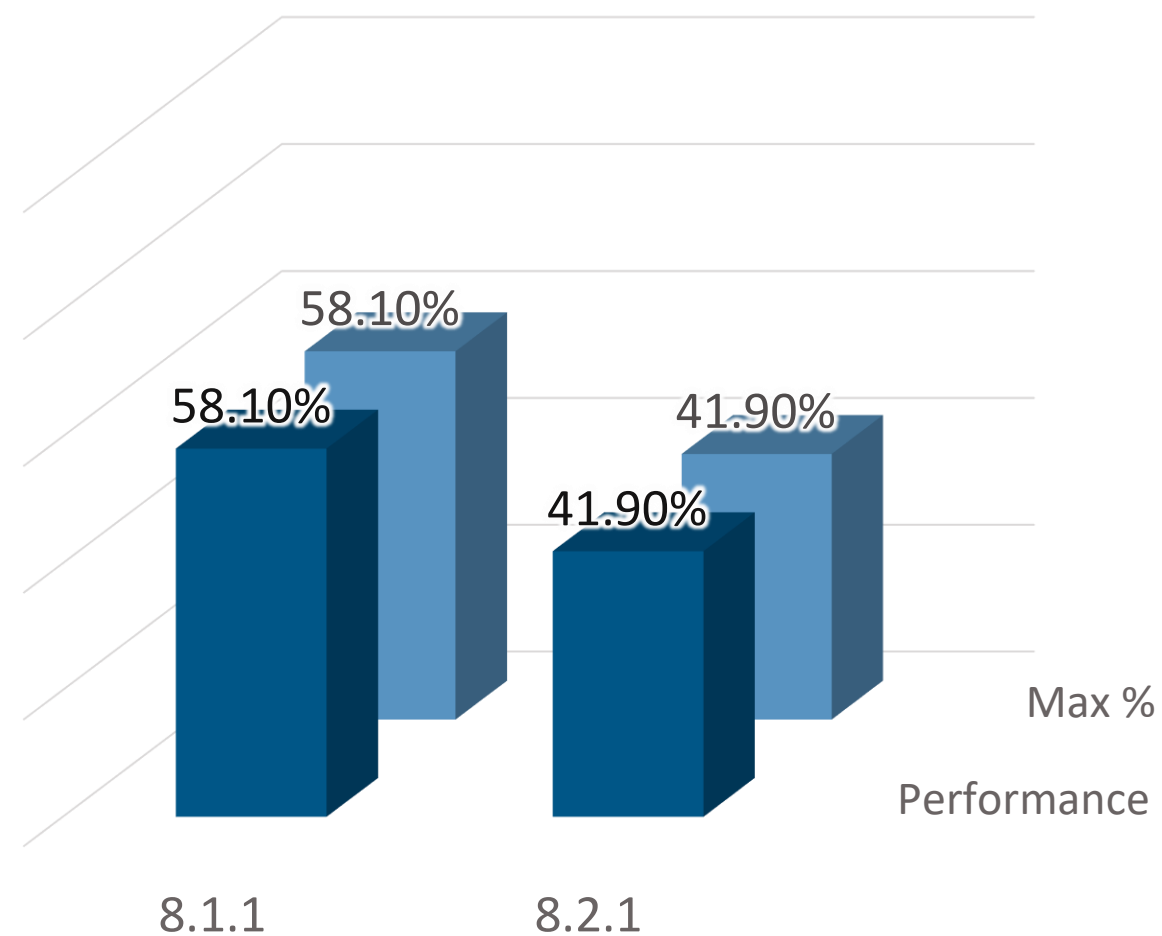
- SLIDE 1 OF 1: 100% COMPLIANCE



8.1.1 - Greenhouse gases emissions are monitored, and restrictions and limits observed.

8.2.1 - Practices to minimize the use of energy are adopted, giving preference to renewable sources.

PRINCIPLE 8 - Greenhouse gases and energy managed effectively



PRINCIPLE 9 - GOOD AGRICULTURAL PRACTICES ADOPTED - SLIDE 1 OF 6: 94.07% COMPLIANCE



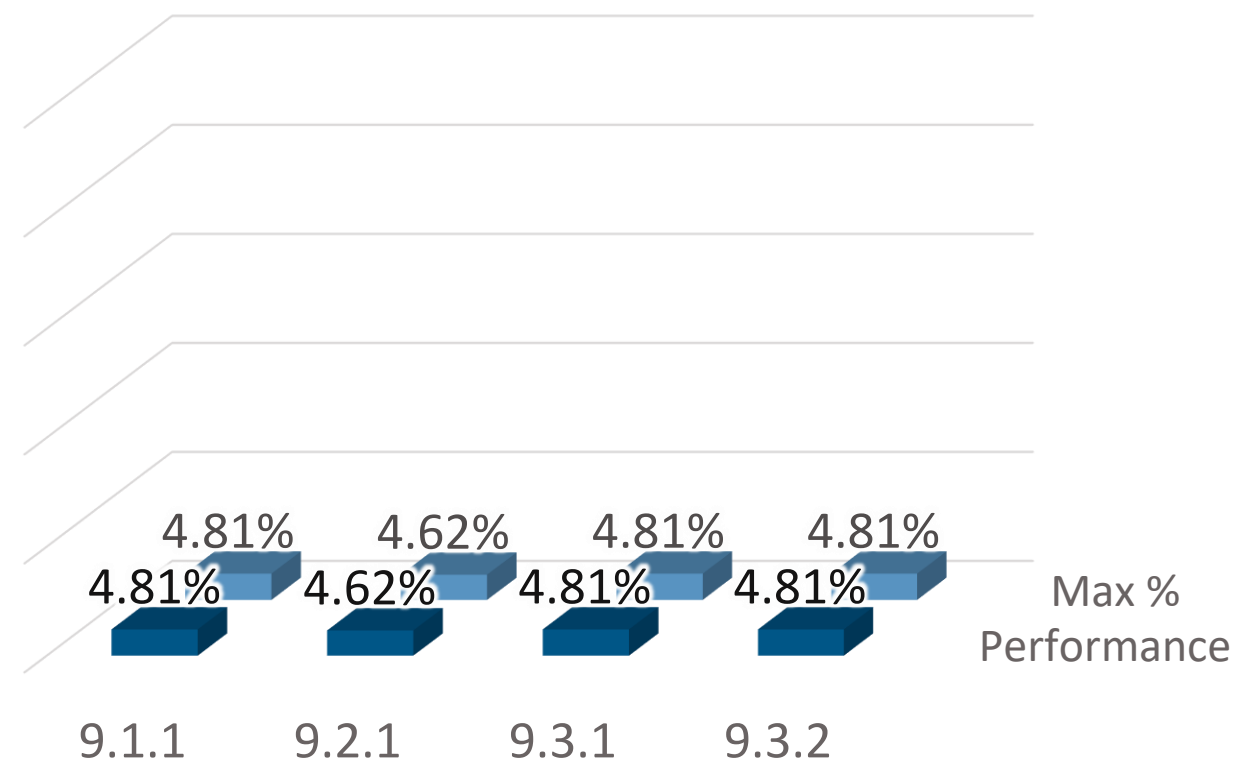
9.1.1 - Good agricultural practices are adopted, for example Integrated Pest Management (IPM).

9.2.1 - No burning of vegetation is used for area cleaning, except when authorized by law.

9.3.1 - Soil and crops are managed to improve soil quality and fertility.

9.3.2 - Soil suitability for the crop cultivation is assessed.

PRINCIPLE 9 - Good agricultural practices adopted



PRINCIPLE 9 - GOOD AGRICULTURAL PRACTICES ADOPTED - SLIDE 2 OF 6: 94.07% COMPLIANCE



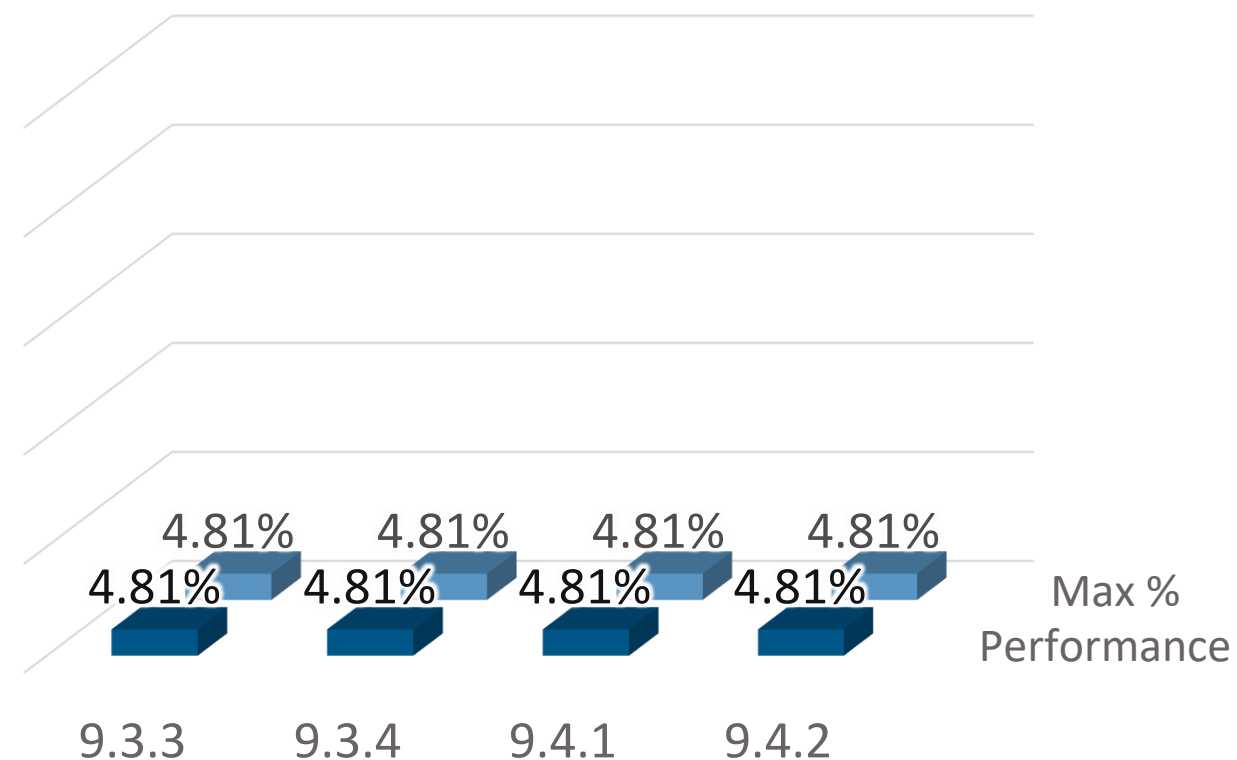
9.3.3 - Fertilizer use is based on recommendations of experts or manufacturers.

9.3.4 - Soil erosion and damage to soil structure are minimized.

9.4.1 - Records of agricultural production are kept for 5 years.

9.4.2 - Seeds records are kept.

PRINCIPLE 9 - Good agricultural practices adopted



PRINCIPLE 9 - GOOD AGRICULTURAL PRACTICES ADOPTED - SLIDE 3 OF 6: 94.07% COMPLIANCE



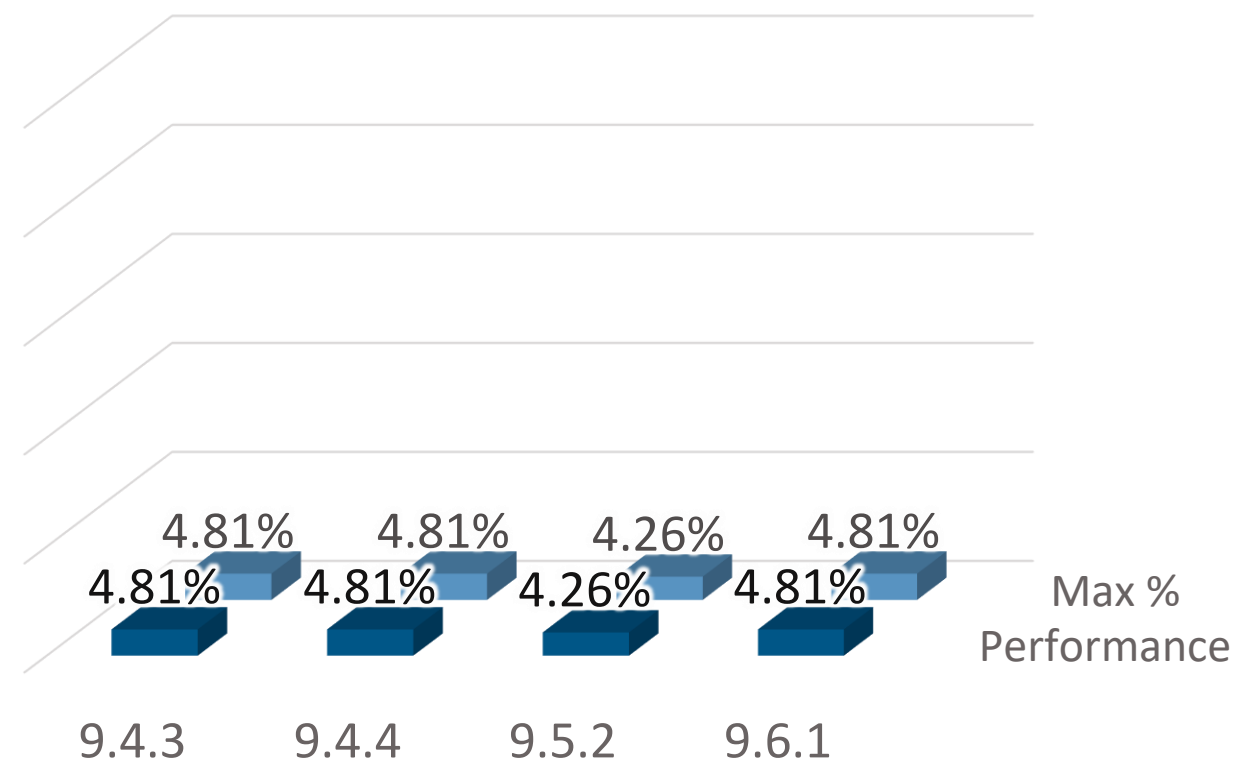
9.4.3 - Agricultural production records are kept.

9.4.4 - Records of fertilizers and pesticides are kept as well as of pests, diseases and unwanted plants.

9.5.2 - Quality of seeds, either saved or obtained by breeding, is maintained.

9.6.1 - The use of toxic or polluting materials is minimized, and pesticides with lower toxicity and environmental impact are selected.

PRINCIPLE 9 - Good agricultural practices adopted



PRINCIPLE 9 - GOOD AGRICULTURAL PRACTICES ADOPTED - SLIDE 4 OF 6: 94.07% COMPLIANCE



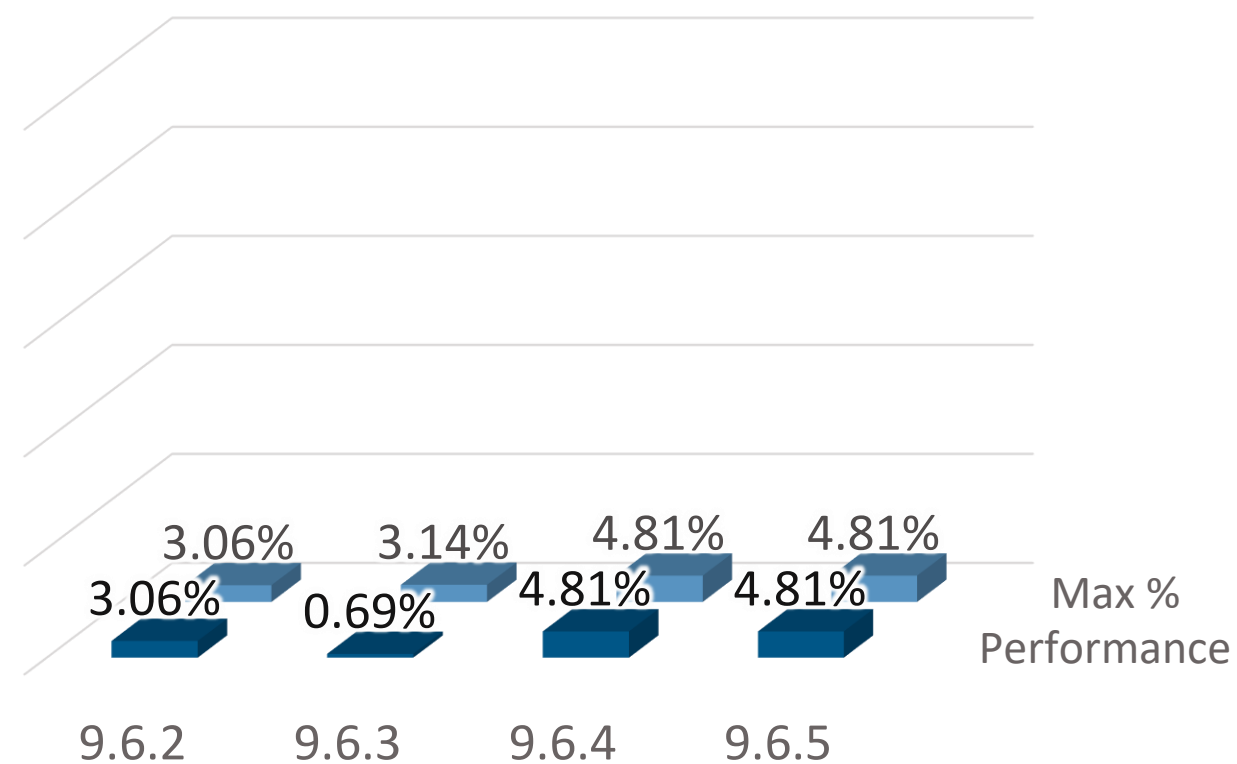
9.6.2 - There is no use of pesticides listed in the WHO List classes 1a, 1b and II, Rotterdam Convention, Stockholm Convention, and PAN international list of highly hazardous pesticides.

9.6.3 - Pesticides used are legal in the country and, although included in the lists cited in 9.6.2, there is a plan for progressive reduction of the use.

9.6.4 - Non-chemical weed control methods are used.

9.6.5 - Good practices are adopted in the use of agrochemicals.

PRINCIPLE 9 - Good agricultural practices adopted



PRINCIPLE 9 - GOOD AGRICULTURAL PRACTICES ADOPTED - SLIDE 5 OF 6: 94.07% COMPLIANCE



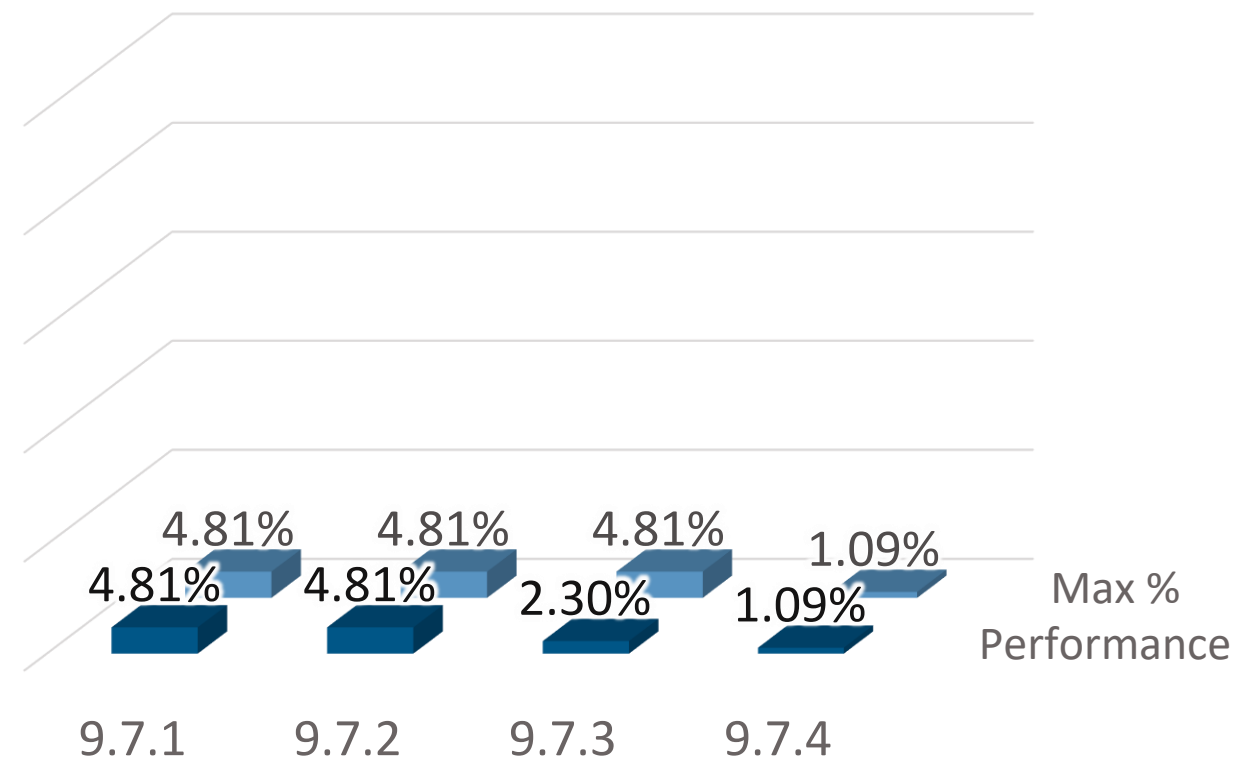
9.7.1 - Methods for the application of agrochemicals that minimize harm to health and the environment are selected.

9.7.2 - There is no pesticide spraying over bodies of water, protected or residential areas, in compliance with applicable laws.

9.7.3 - Recently sprayed areas are properly marked to prevent people entrance.

9.7.4 - Aerial spraying is carried out only under good weather conditions, in compliance with applicable laws.

PRINCIPLE 9 - Good agricultural practices adopted



PRINCIPLE 9 - GOOD AGRICULTURAL PRACTICES ADOPTED - SLIDE 6 OF 6: 94.07% COMPLIANCE



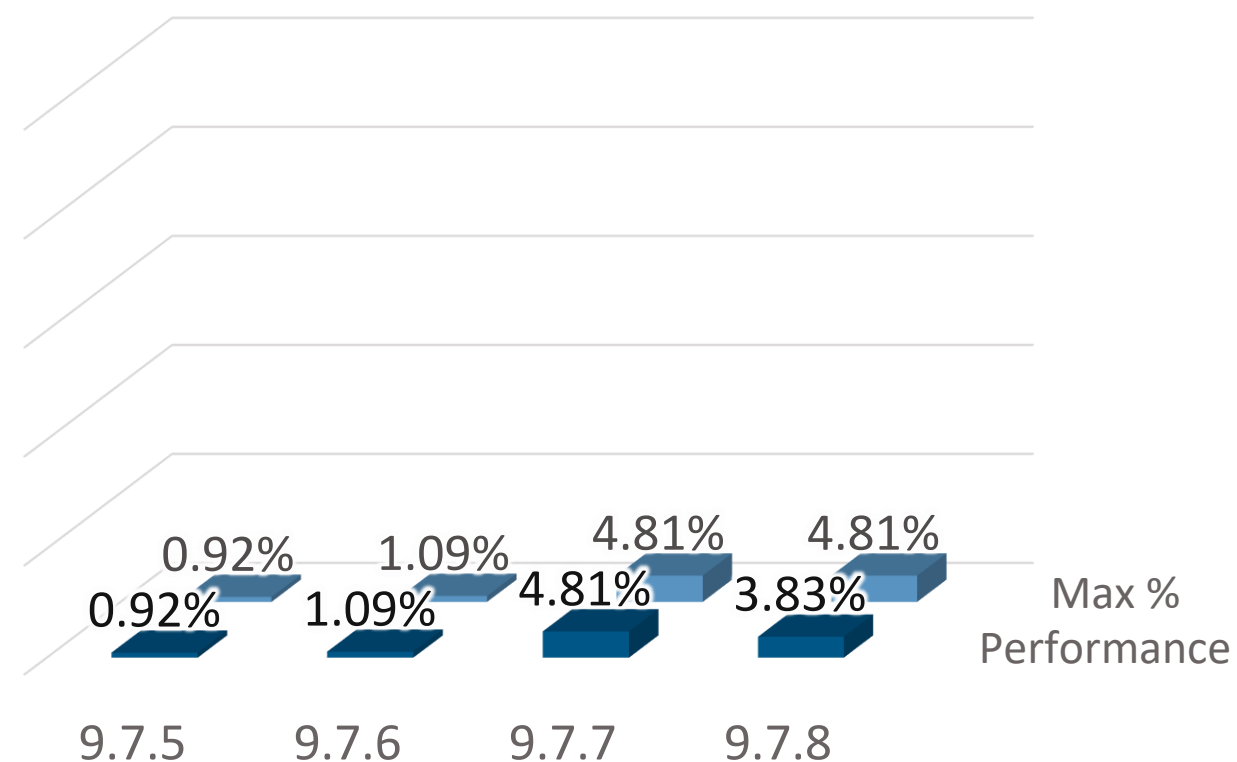
9.7.5 - Residents within 1 km are advised one day in advance of aerial spraying.

9.7.6 - Aerial spraying is not performed with pesticides listed in the WHO List classes 1a, 1b and II, Rotterdam Convention, Stockholm Convention, and PAN international list of highly hazardous pesticides.

9.7.7 - Quarantine periods after application of pesticides are respected.

9.7.8 - Pesticides are handled, stored, transported, and disposed in accordance with manufacturers' instructions and legal requirements.

PRINCIPLE 9 - Good agricultural practices adopted



THANK YOU!

ProTerra Standard v3.0

Produced by FOODCHAIN ID CERTIFICAÇÃO

FOODCHAIN ID[®]
CERTIFICAÇÃO